

# VCE

range  
10-90

» DIMENSIONS



ISO 9002 - Cert. n. 1368/1

**ventilclima**<sup>®</sup>  
Apparecchi per la Climatizzazione

## CENTRIFUGAL FAN COIL UNITS

MD VCE1090 0103 VENTILCLIMA.IT

## INDEX

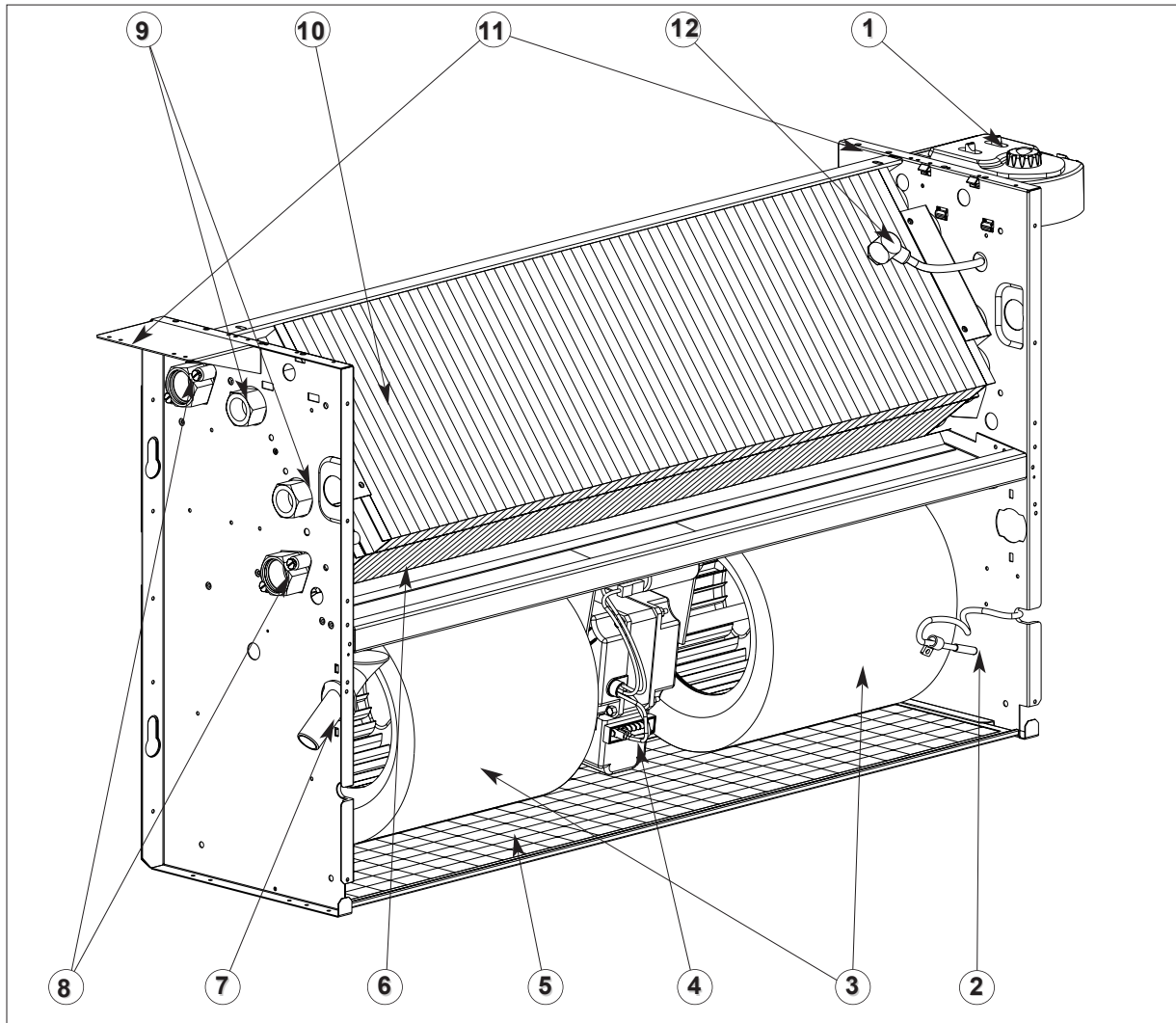
Main components	3
General features and description of the components	4
<b>Centrifugal fan coil units with cabinet</b>	
<i>Wall mounted:</i>	
Version VCEx0: Wall mounted with cabinet (bottom air intake)	6
Version VCEx8: Wall mounted with cabinet (frontal air intake with socle)	7
Version VCEx5: Wall mounted with cabinet (frontal air intake)	8
 Horizontal ceiling models	
Version VCEx1: Horizontal ceiling models with cabinet (bottom air intake with socle)	9
Version VCEx9: Horizontal ceiling models with cabinet (rear air intake)	10
Version VCEx4: Horizontal ceiling models with cabinet (bottom air intake)	11
 <b>Centrifugal fan coil unit recessed models</b>	
<i>Wall mounted:</i>	
Version VCEx2: Vertical recessed models (top air discharge)	12
Version VCEx7: Vertical recessed models (frontal air discharge)	13
 Horizontal ceiling models	
Version VCEx3: Horizontal ceiling recessed models (horizontal ceiling concealed models)	14

2



**MAIN COMPONENTS**

- 1 Control Board
- 2 Room temperature control
- 3 Centrifugal fan
- 4 Electric motor
- 5 Air filter
- 6 Heat exchanger (standard 3R coil)
- 7 Condense discharge
- 8 Water connections (standard 3R coil)
- 9 Water connections (1R coil)
- 10 Heat exchanger (1R coil)
- 11 Bearing structure
- 12 Water low temperature sensor



3

## GENERAL FEATURES AND DESCRIPTION OF THE COMPONENTS

The fan coils have small dimensions and are 220 mm thin. They are available in **90 different models** allowing all possible installation requirements:

- **Wall mounted or floor mounted type with supporting feet, with bottom or frontal air intake.**
- **Horizontal ceiling mounted type, with rear or bottom air intake.**
- **Vertical wall recessed type, with top or frontal air discharge -outlet; horizontal ceiling concealed type with frontal air discharge.**

A wide range of options and accessories is available for complete requirement satisfaction:

- 4-pipe systems (main plus auxiliary coil)
- Water flow and temperature control with the using of of 3-way or 2-way valves
- Electric heating coils
- Outside air volume control with manual or motorised damper
- Straight and 90° adaptors (plenum) for recessed units
- Pre-coated galvanized steel or coated wooden panel with grilles (recessed units)
- Units can be adapted looking customer requirements

### STRUCTURE

Galvanized steel sheet (8/10 mm thick) insulated in all parts in direct contact with the conditioned air. Insulated condensate tray made of galvanised steel sheet, complete with drain for complete drainage. Sides with knock-outs for a fast fixing of accessories. Wall-anchoring slots for easy fixing and levelling of the unit.

4

### HEAT EXCHANGER

Coils are made of copper pipe expanded into aluminium fins in continuous block. Brass headers with female fittings (GAS threads) and easily accessible air vents.

In the standard version, water connections are located on the left side (looking air outlet). On request right side water connections are available. Please specify, in your order, if connections are on the right or the left side.

### VENTILATION GROUP

Double-inlet centrifugal fans with statically and dynamically balanced horizontally-oriented aluminium impellers.

Single-phase asynchronous electric motor with overload cut-out. 6 speeds of rotation (3 connected). The motor is directly coupled to the fans and cushioned with flexible mountings to ensure low noise.

### CABINET

Modern design that blends in with any environment.

Made in hot-dip galvanized steel sheet pre-coated with PVC to ensure high resistance to rust, corrosion, chemical agents, aliphatic solvents and alcohols. ABS adjustable air grilles and the control panel protective flap are inserted in the cabinet top.

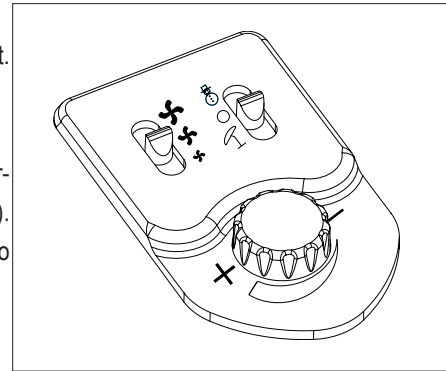
Standard colour: white. Other RAL colours are available on request, additional price according to quantities.

**CONTROL PANEL**

An integral part of the unit, located within a protected control compartment. Several options are available:

**Standard** (built-in) - Cooling/Off/Heating selector plus 3-speed switch.

**Optional** - mechanical room thermostat (TA), minimum water temperature thermostat (TC), control panel complete with electronic thermostat (in lieu of standard). The recessed units are provided with a terminal board used for the connection to the remote control. A wide range of remote controls is available.



**AIR FILTER**

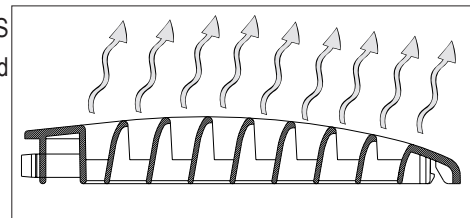
Filtering honeycomb polypropylene fabric enclosed within a metal frame to facilitate with drawal and cleaning.

Filtering rate of the standard model: EU1. Available with different filtering rate on request.

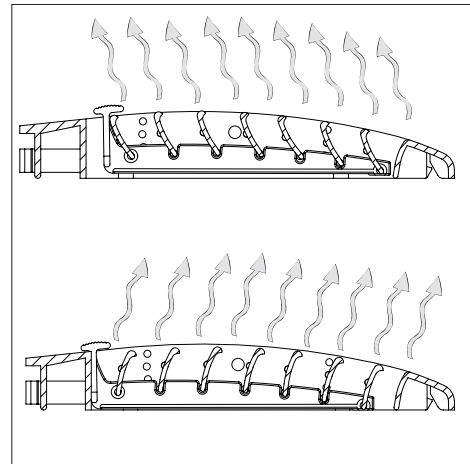
**OUTLET AIR GRILL**

Placed on the upper side of cabinet, the grills consist of 100 mm adjustable ABS or Nylon elements to allow a better air distribution in the environment. Standard colour is light grey.

**Optional:** top airflow direction louvers.



*Top airflow fixed grills*



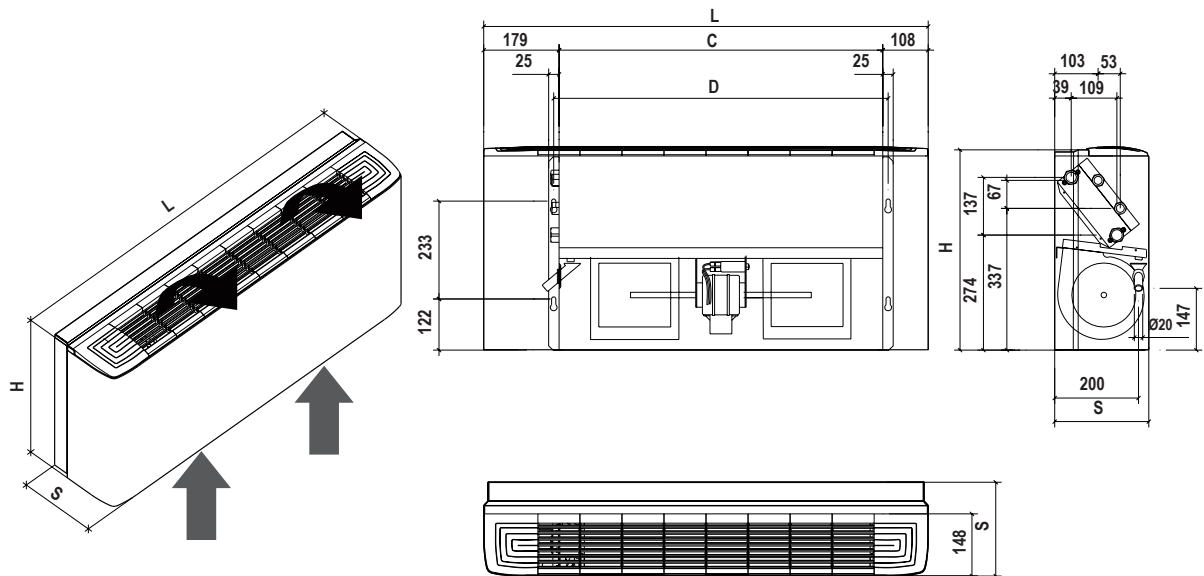
*Top airflow direction louvers*



**Warning!**  
When using the electric heating elements, nylon outlet grills must be installed.

**VERSION 0 - mod. 10-60**

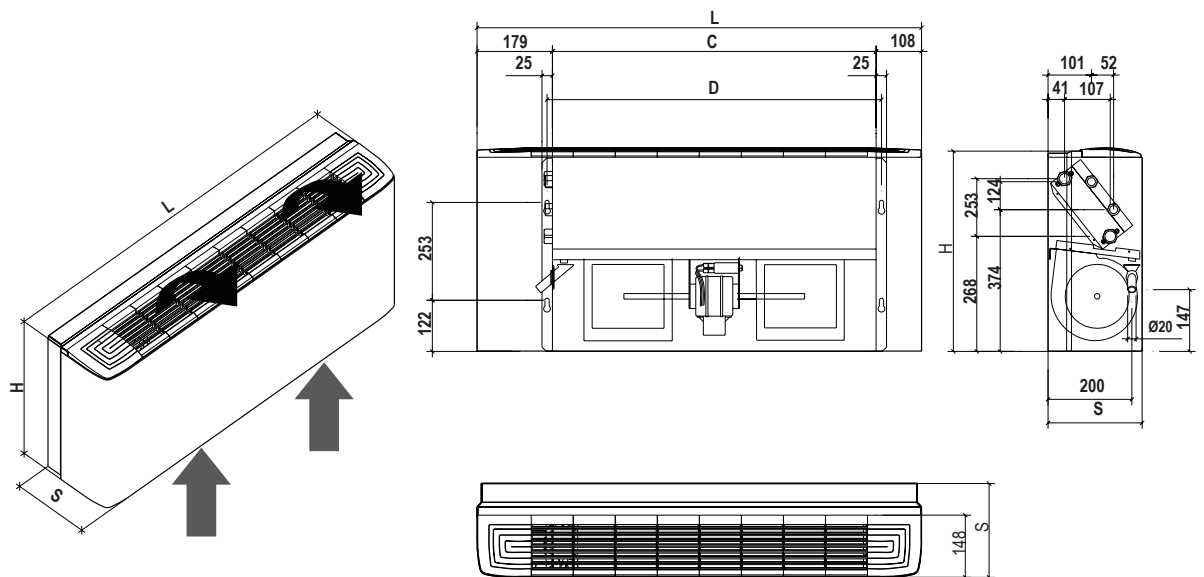
Wall mounted with cabinet (bottom air intake)



**VERSION 0 - mod. 70-90**

Wall mounted with cabinet (bottom air intake)

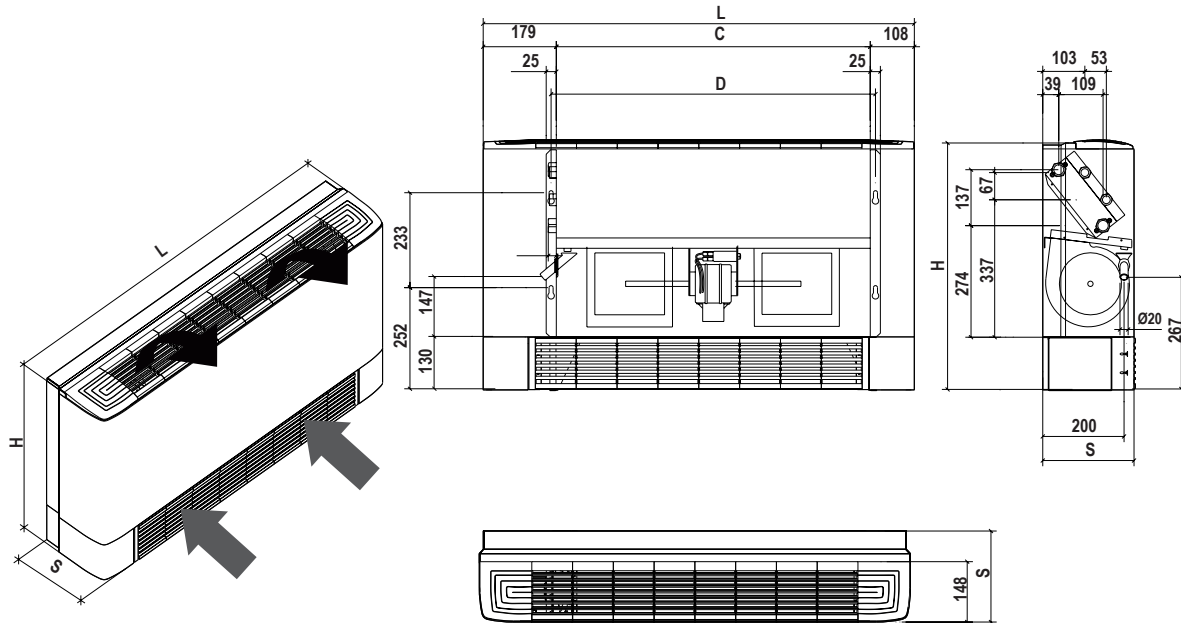
6



MODEL				VCE10	VCE20	VCE30	VCE40	VCE50	VCE60	VCE70	VCE80	VCE90
Dimensions	Height	H	mm	480	480	480	480	480	480	580	580	580
	Width	L	mm	660	860	1.060	1.060	1.260	1.260	1.260	1.460	1.460
	Depth	S	mm	220	220	220	220	220	220	220	220	220
		C	mm	370	570	770	770	970	970	970	1.170	1.170
		D	mm	395	595	795	795	995	995	995	1.195	1.195

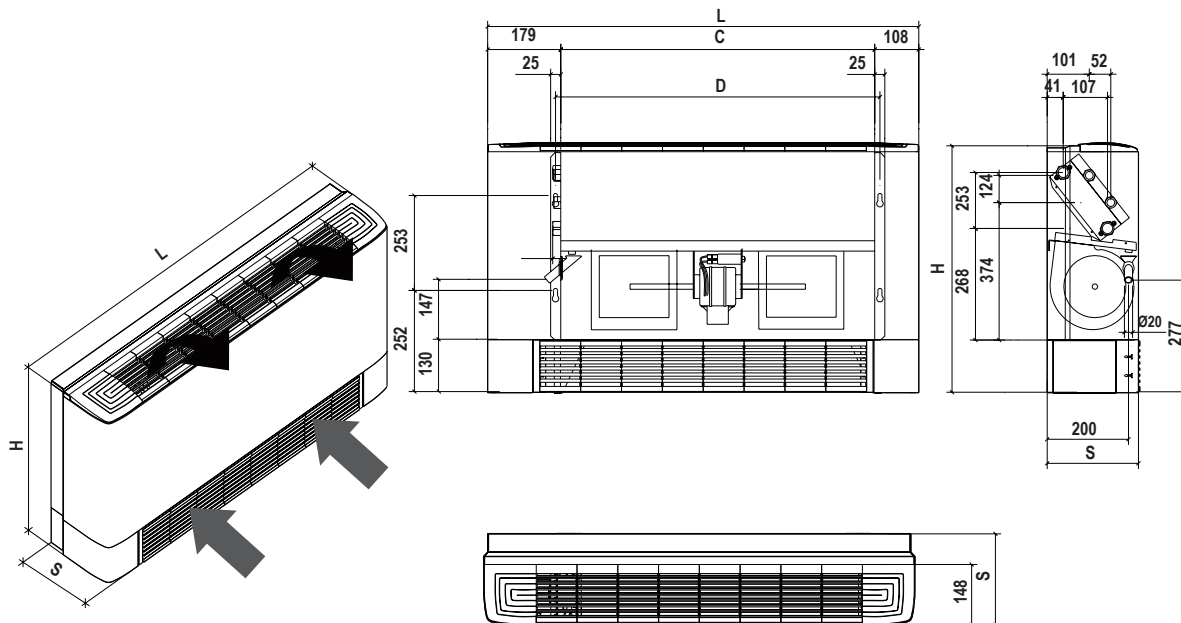
**VERSION 8 - mod. 10-60**

Wall mounted with cabinet (frontal air intake with socle)



**VERSION 8 - mod. 70-90**

Wall mounted with cabinet (frontal air intake with socle)

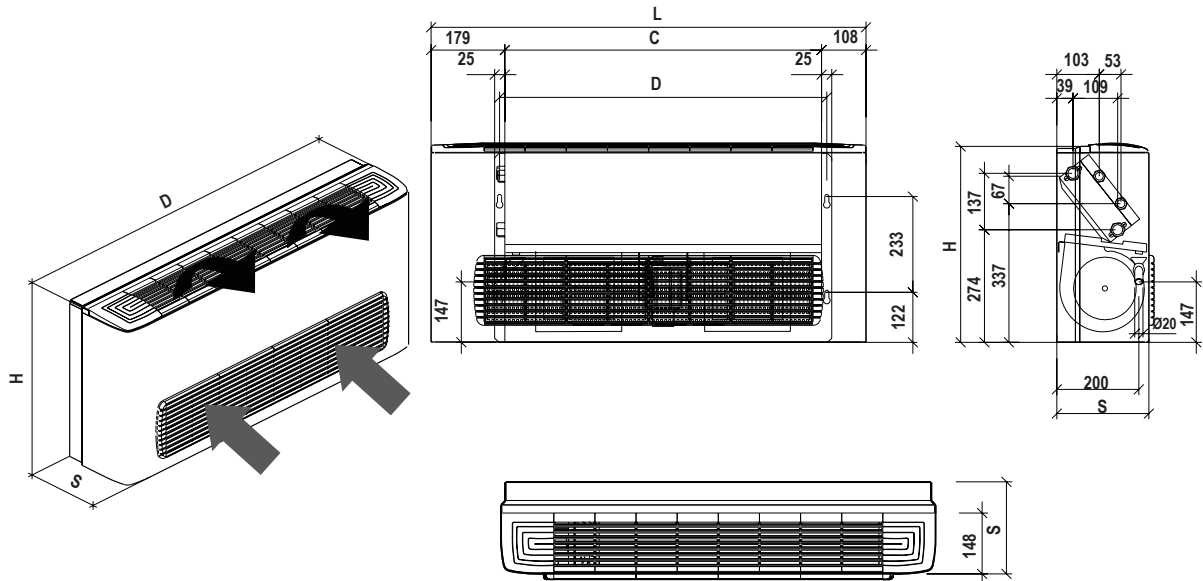


7

MODEL				VCE10	VCE20	VCE30	VCE40	VCE50	VCE60	VCE70	VCE80	VCE90
Dimensions	Height	H	mm	610	610	610	610	610	610	710	710	710
	Width	L	mm	660	860	1.060	1.060	1.260	1.260	1.260	1.460	1.460
	Depth	S	mm	220	220	220	220	220	220	220	220	220
		C	mm	370	570	770	770	970	970	970	1.170	1.170
	D	mm	395	595	795	795	995	995	995	995	1.195	1.195

**VERSION 5 - mod. 10-60**

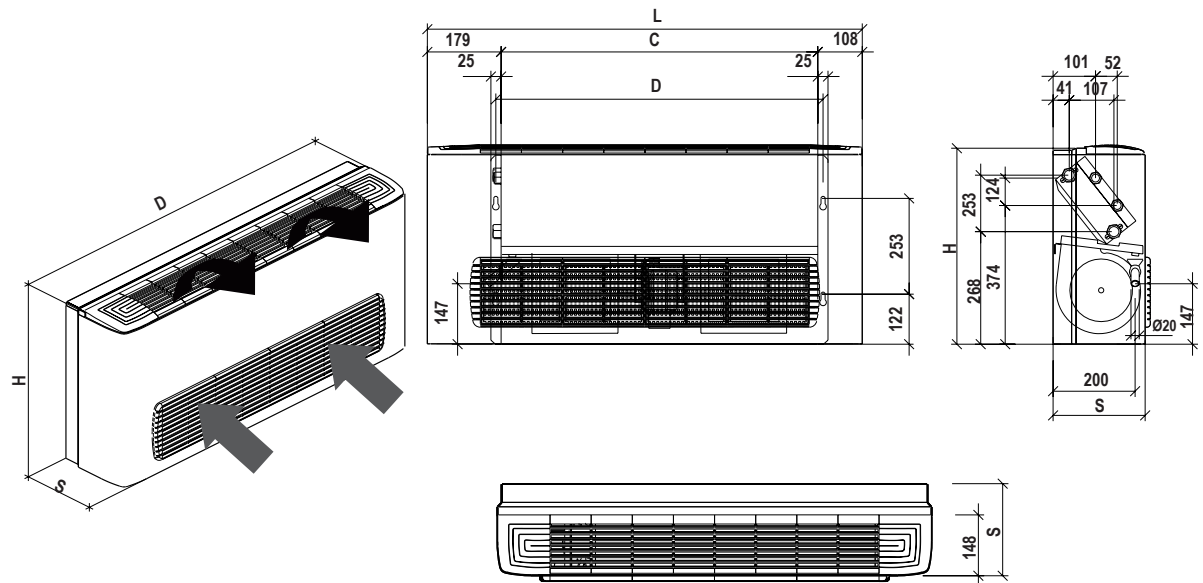
Wall mounted with cabinet (frontal air intake)



**VERSION 5 - mod. 70-90**

Wall mounted with cabinet (frontal air intake)

8

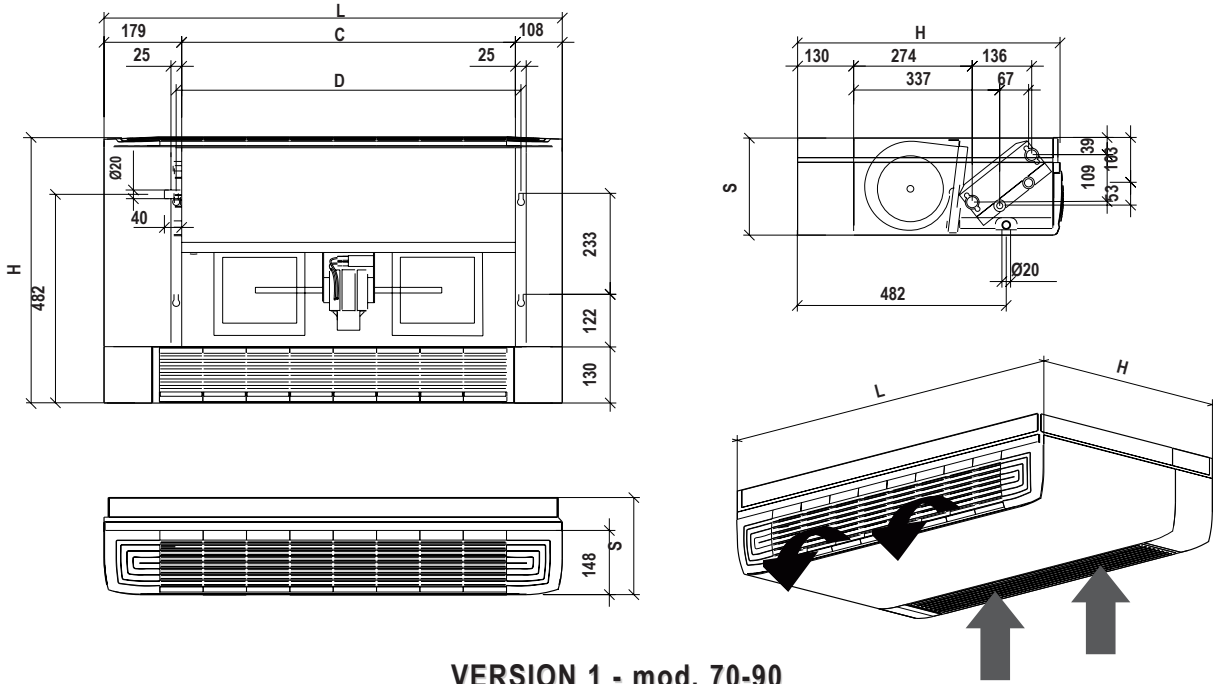


MODEL				VCE10	VCE20	VCE30	VCE40	VCE50	VCE60	VCE70	VCE80	VCE90
Dimensions	Height	H	mm	480	480	480	480	480	480	580	580	580
	Width	L	mm	660	860	1.060	1.060	1.260	1.260	1.260	1.460	1.460
	Depth	S	mm	220	220	220	220	220	220	220	220	220
		C	mm	370	570	770	770	970	970	970	1.170	1.170
		D	mm	395	595	795	795	995	995	995	1.195	1.195



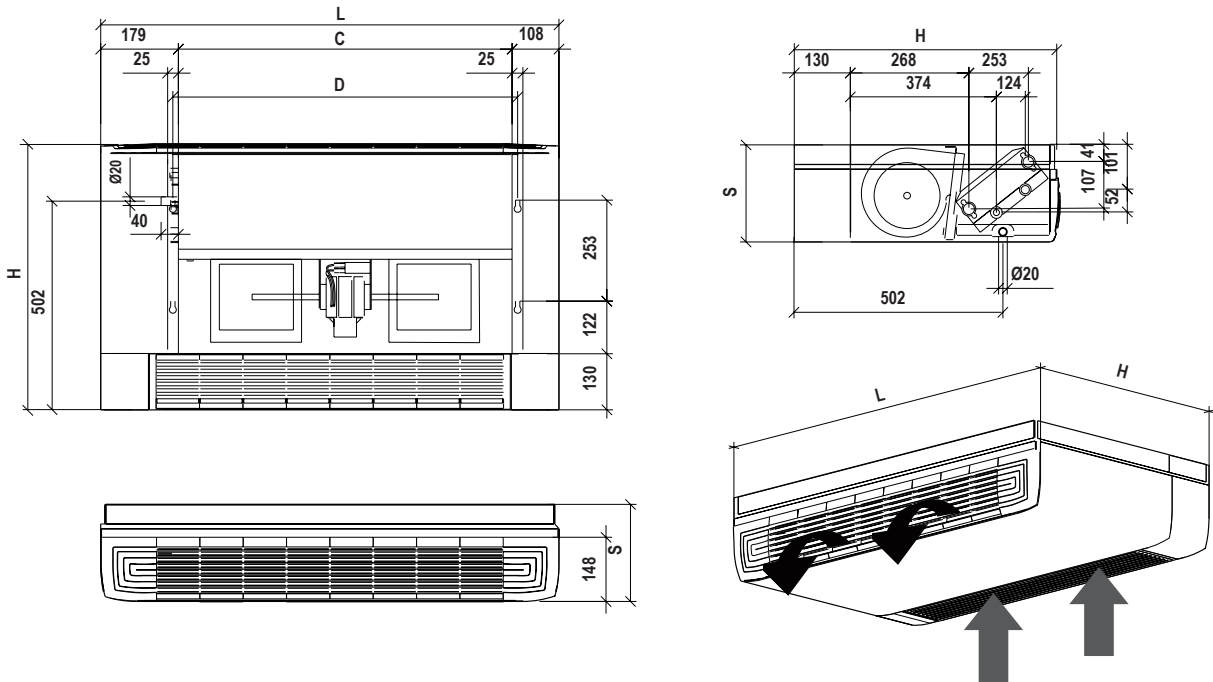
**VERSION 1 - mod. 10-60**

Horizontal ceiling models with cabinet (bottom air intake with socle)



**VERSION 1 - mod. 70-90**

Horizontal ceiling models with cabinet (bottom air intake with socle)

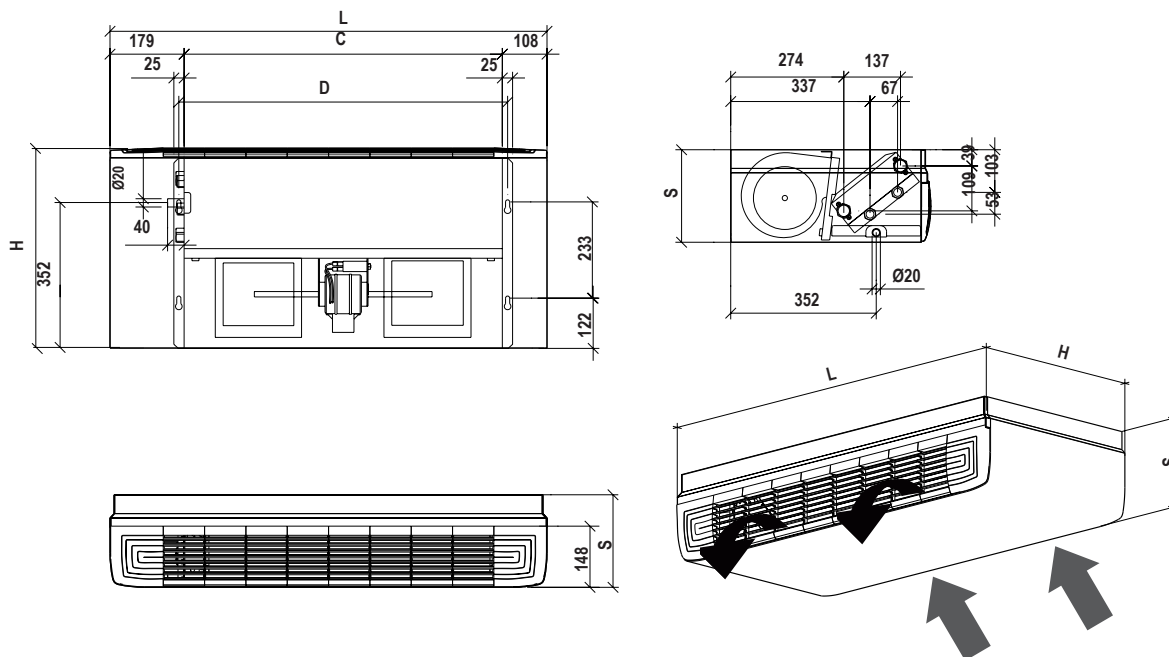


9

MODEL				VCE10	VCE20	VCE30	VCE40	VCE50	VCE60	VCE70	VCE80	VCE90
Dimensions	Height	H	mm	610	610	610	610	610	610	710	710	710
	Width	L	mm	660	860	1.060	1.060	1.260	1.260	1.260	1.460	1.460
	Depth	S	mm	220	220	220	220	220	220	220	220	220
		C	mm	370	570	770	770	970	970	970	1.170	1.170
		D	mm	395	595	795	795	995	995	995	1.195	1.195

**VERSION 9 - mod. 10-60**

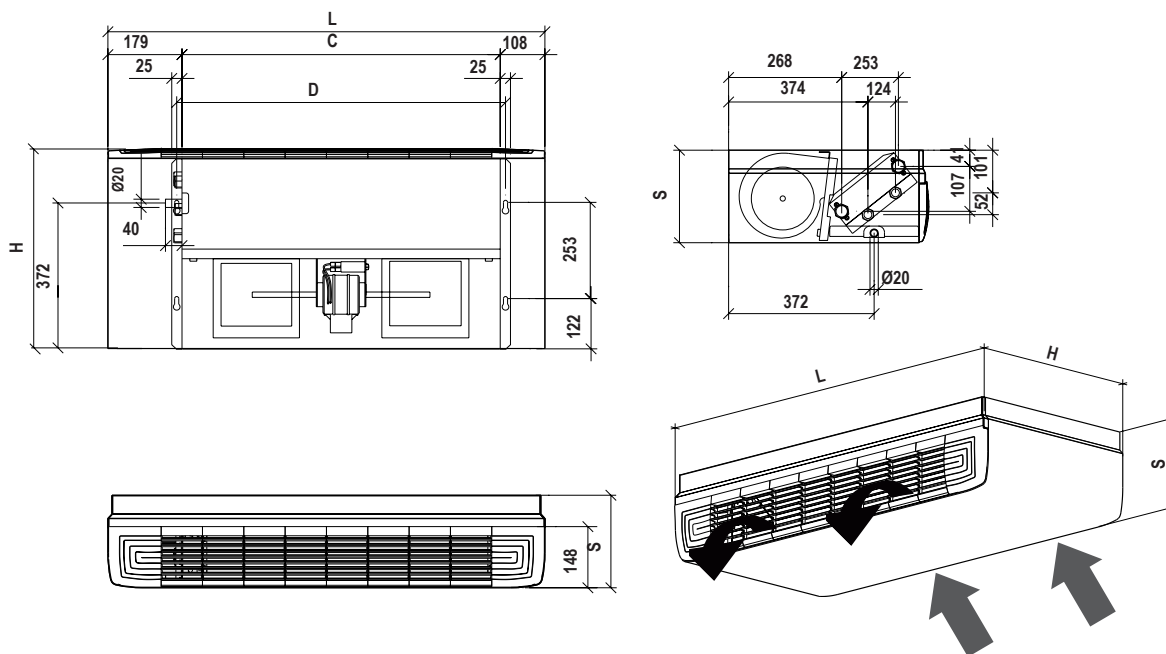
Horizontal ceiling models with cabinet (rear air intake)



**VERSION 9 - mod. 70-90**

Horizontal ceiling models with cabinet (rear air intake)

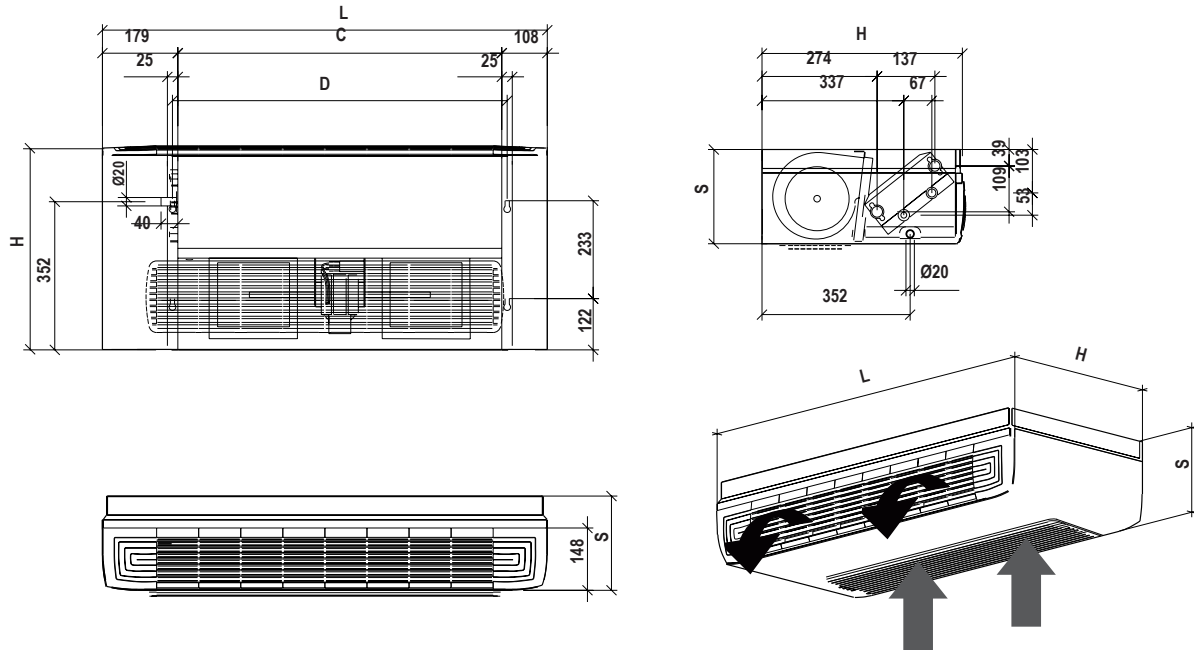
10



MODEL			VCE10	VCE20	VCE30	VCE40	VCE50	VCE60	VCE70	VCE80	VCE90
Dimensions	Height	H	mm	480	480	480	480	480	580	580	580
	Width	L	mm	660	860	1.060	1.060	1.260	1.260	1.260	1.460
	Depth	S	mm	220	220	220	220	220	220	220	220
		C	mm	370	570	770	770	970	970	970	1.170
		D	mm	395	595	795	795	995	995	995	1.195

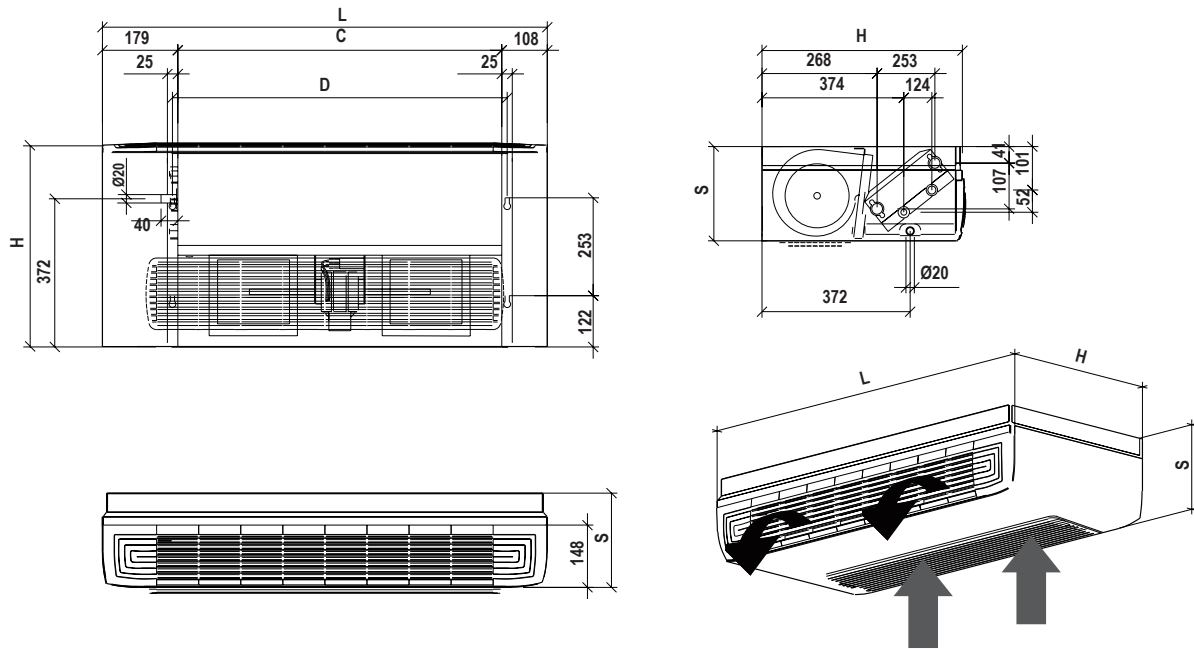
**VERSION 4 - mod. 10-60**

Horizontal ceiling models with cabinet (bottom air intake)



**VERSION 4 - mod. 70-90**

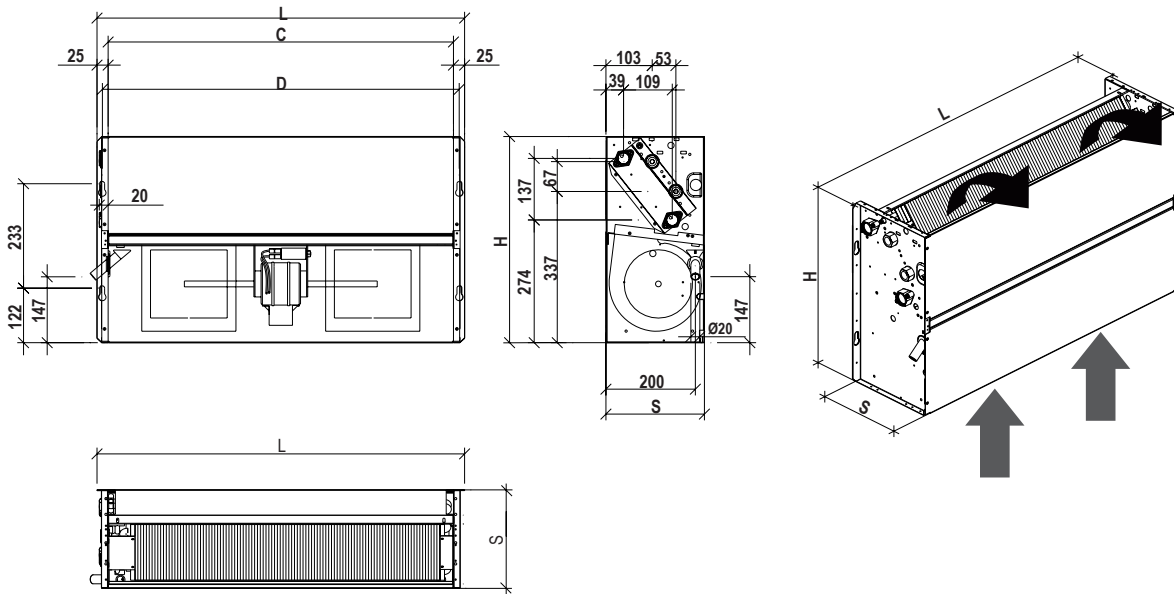
Horizontal ceiling models with cabinet (bottom air intake)



MODEL				VCE10	VCE20	VCE30	VCE40	VCE50	VCE60	VCE70	VCE80	VCE90
Dimensions	Height	H	mm	480	480	480	480	480	480	580	580	580
	Width	L	mm	660	860	1.060	1.060	1.260	1.260	1.260	1.460	1.460
	Depth	S	mm	220	220	220	220	220	220	220	220	220
		C	mm	370	570	770	770	970	970	970	1.170	1.170
	D	mm	395	595	795	795	995	995	995	1.195	1.195	

**VERSION 2 - mod. 10-60**

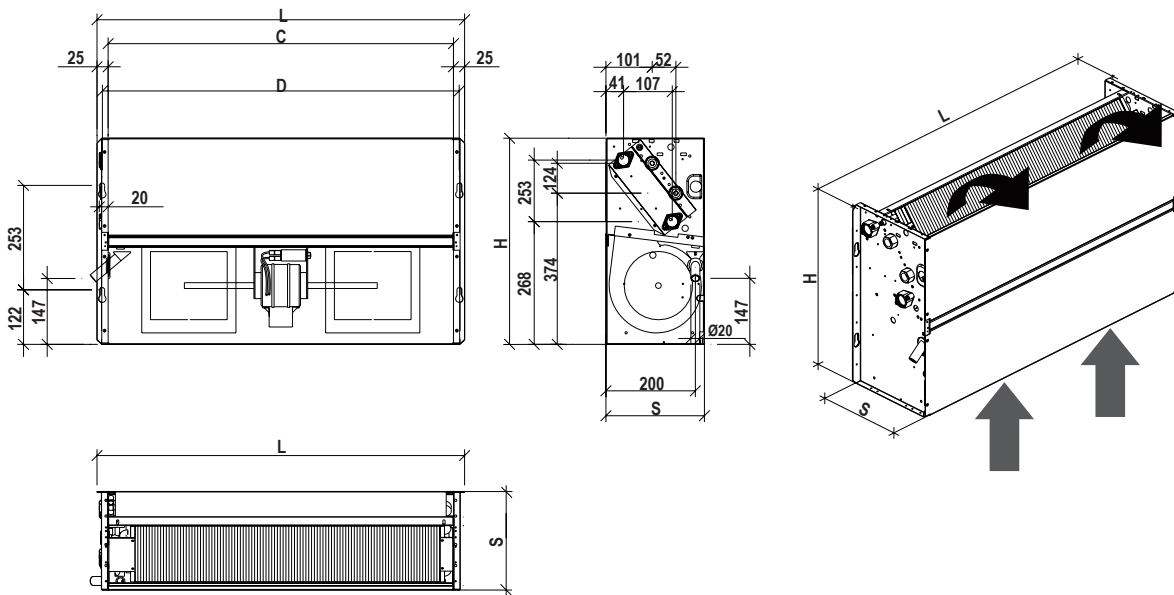
Recessed models (top air discharge)



**VERSION 2 - mod. 70-90**

Recessed models (top air discharge)

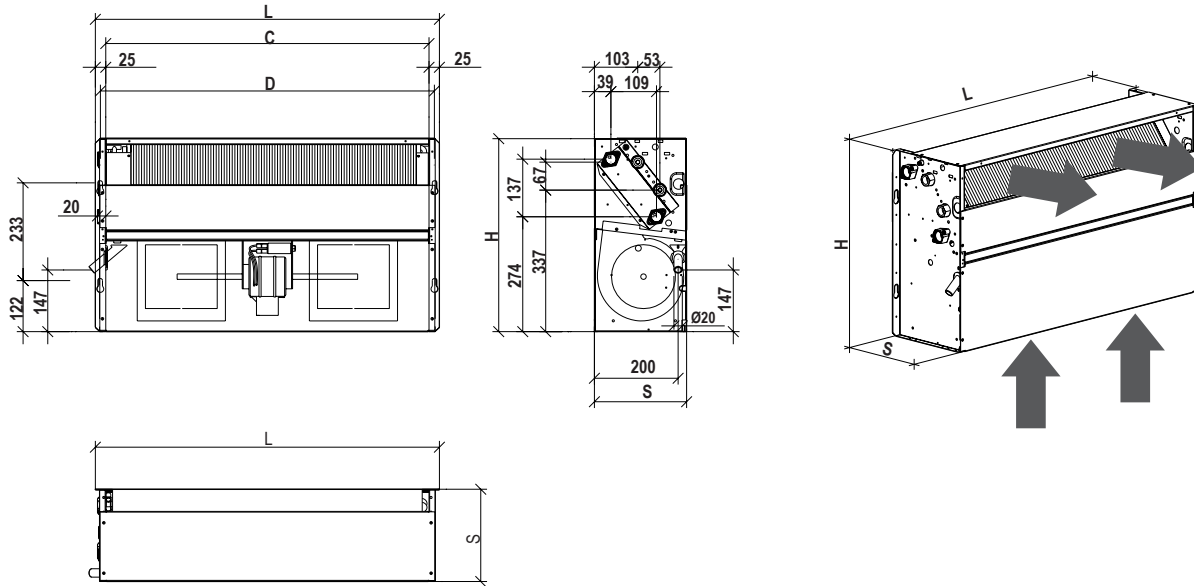
12



MODEL				VCE10	VCE20	VCE30	VCE40	VCE50	VCE60	VCE70	VCE80	VCE90
Dimensions	Height	H	mm	460	460	460	460	460	460	565	565	565
	Width	L	mm	420	620	820	820	1.020	1.020	1.020	1.220	1.220
	Depth	S	mm	220	220	220	220	220	220	220	220	220
		C	mm	370	570	770	770	970	970	970	1.170	1.170
		D	mm	395	595	795	795	995	995	995	1.195	1.195

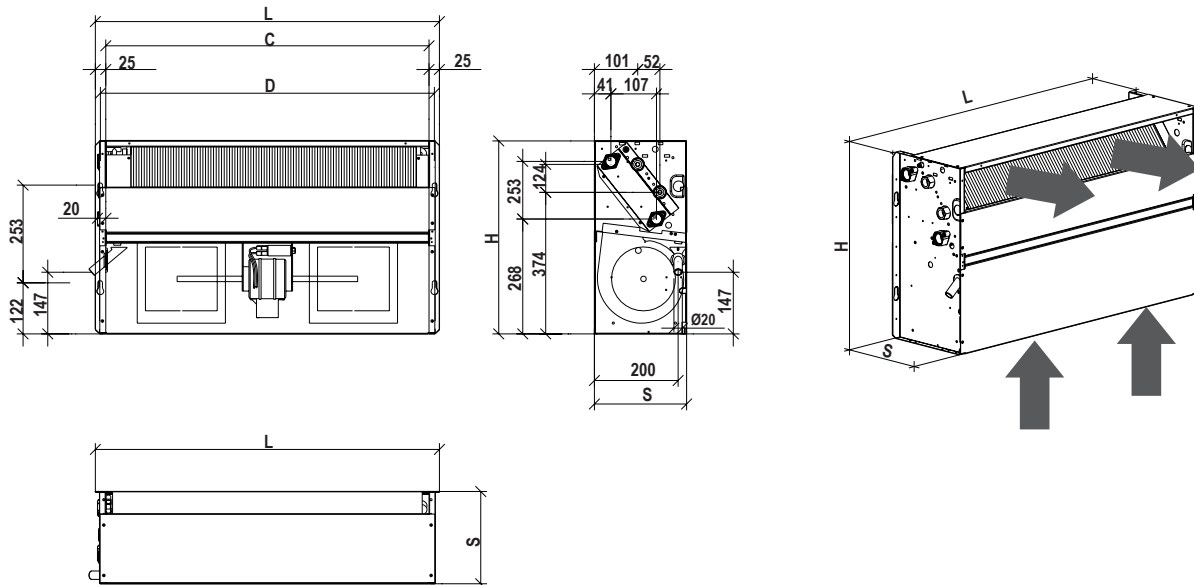
**VERSION 7 - mod. 10-60**

Vertical recessed models (frontal air discharge)



**VERSION 7 - mod. 70-90**

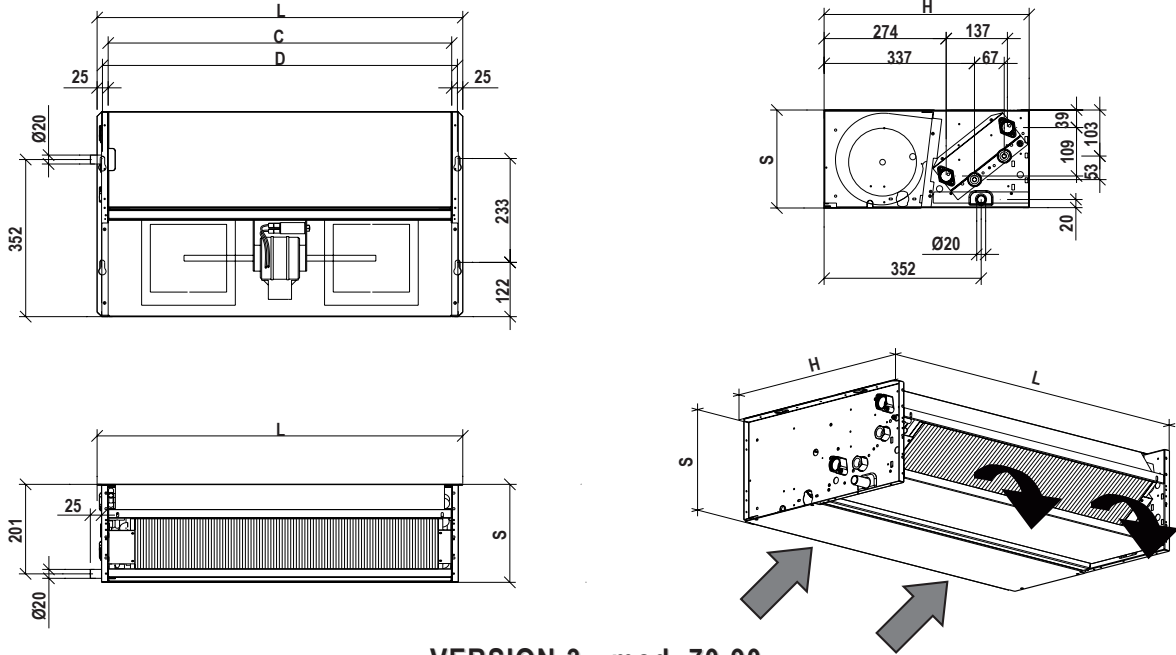
Vertical recessed models (frontal air discharge)



MODEL				VCE10	VCE20	VCE30	VCE40	VCE50	VCE60	VCE70	VCE80	VCE90
Dimensions	Height	H	mm	460	460	460	460	460	460	565	565	565
	Width	L	mm	420	620	820	820	1.020	1.020	1.020	1.220	1.220
	Depth	S	mm	220	220	220	220	220	220	220	220	220
		C	mm	370	570	770	770	970	970	970	1.170	1.170
		D	mm	395	595	795	795	995	995	995	1.195	1.195

**VERSION 3 - mod. 10-60**

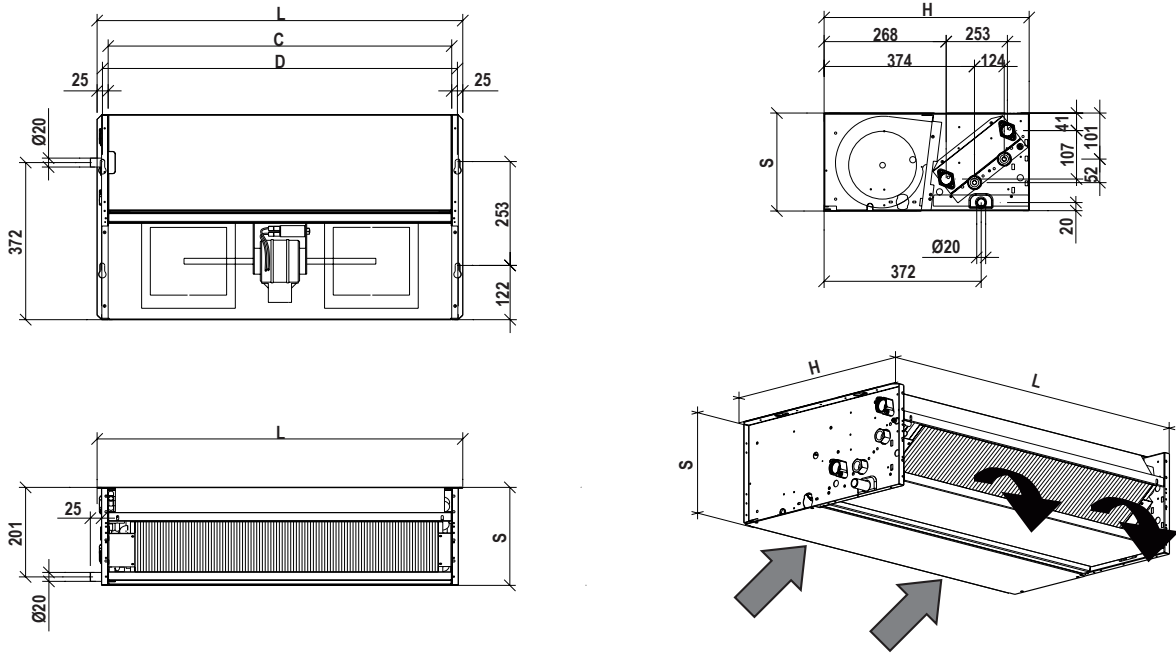
Recessed models (horizontal ceiling concealed models)



**VERSION 3 - mod. 70-90**

Recessed models (horizontal ceiling concealed models)

14



MODEL				VCE10	VCE20	VCE30	VCE40	VCE50	VCE60	VCE70	VCE80	VCE90
Dimensions	Height	H	mm	460	460	460	460	460	460	565	565	565
	Width	L	mm	420	620	820	820	1.020	1.020	1.020	1.220	1.220
	Depth	S	mm	220	220	220	220	220	220	220	220	220
		C	mm	370	570	770	770	970	970	970	1.170	1.170
		D	mm	395	595	795	795	995	995	995	1.195	1.195



All data in this technical manual are no-binding for Ventilclima company who takes the right, without advance notice obligation, to provide to any modification for product improvements.

**Ventilclima takes part in EUROVENT CERTIFICATION program.  
All products are included in EUROVENT DIRECTORY.**



VENTILCLIMA S.p.A.  
31020 SAN ZENONE DEGLI EZZELINI (TV) - Italy - Via Montegrappa, 67  
Tel. (0039) 0423/969037 r.a. - Telefax (0039) 0423/968197  
http: [www.ventilclima.com](http://www.ventilclima.com) - e-mail: [info@ventilclima.com](mailto:info@ventilclima.com)



ISO 9002 - Cert. n. 1368/1

**CENTRIFUGAL FAN COIL UNITS**

MD VCE 1090 0103 VENTILCLIMA IT