

2007-01-12



Kylmedelkylare

**LHL**

Kondensor

**CHV**

Ø 800

Instruktioner



TPI Klimatimport AB

[www.tpiab.com](http://www.tpiab.com)

[info@tpiab.com](mailto:info@tpiab.com)

## INNEHÅLLSFÖRTECKNING:

Försiktighetsåtgärder	2
Lyftinstruktioner	3
Resning av enhet	4
Horisontell installation, 1-6 fläktar	5
Benens placering, kretstyp, 1-6 fläktar	6
Horisontell installation, 4-10 fläktar	7
Benens placering, kretstyp, 4-10 fläktar	8
Vertikal installation	9
Avståndsguide	10
Förankring, anslutningar, rengöring	11
Fläktmotorer/motoranslutningar - eldata	12
Arbetsbrytare - eldata	13
CE-Intyg	14

## FÖRSIKTIGHETSÅTGÄRDER

Vid transport, installation och underhåll är det viktigt att följande punkter efterlevs:

- Anlita endast auktoriserad personal vid transport och lyft
- Använd skyddshandskar
- Vistas aldrig under hängande last

Vid elarbeten:

- Anlita endast auktoriserad personal
- Kontrollera att det ej finns spänning till enheten
- Att huvudbrytaren på enheten är frånslagen och i låst läge

***Kylaren får inte anslutas till annan spänning eller frekvens än dess märkdata***

Innan arbeten påbörjas på köldmediesidan:

- Anlita endast auktoriserad personal
- Kontrollera att inkommande anslutningar ej står under tryck
- Vid hårdlödning vändes lågan från materialdelar

Avyttring/Återvinning:

- *Plastmaterial:* Polyeten, ABS, gummi
- *Metall:* Järn, rostfritt stål, koppar, aluminium (i vissa fall behandlat)
- *Kylmedel:* Följ instruktionerna relevanta till installationen

Avlägsna skyddande plastfilm från lackerade ytor

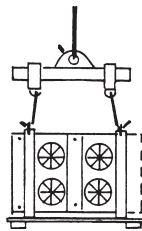
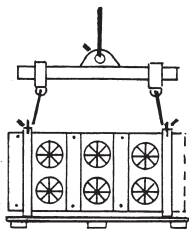
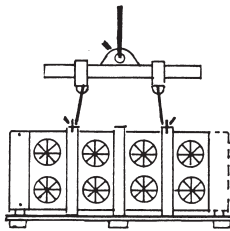
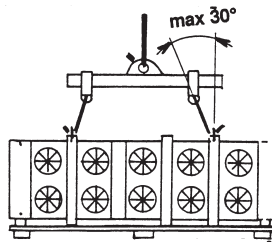
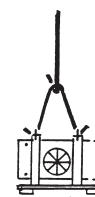
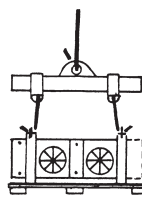
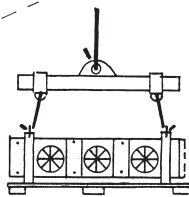
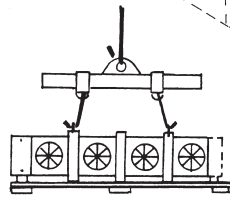
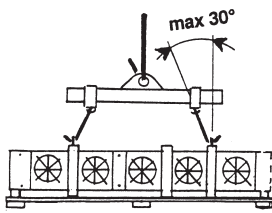
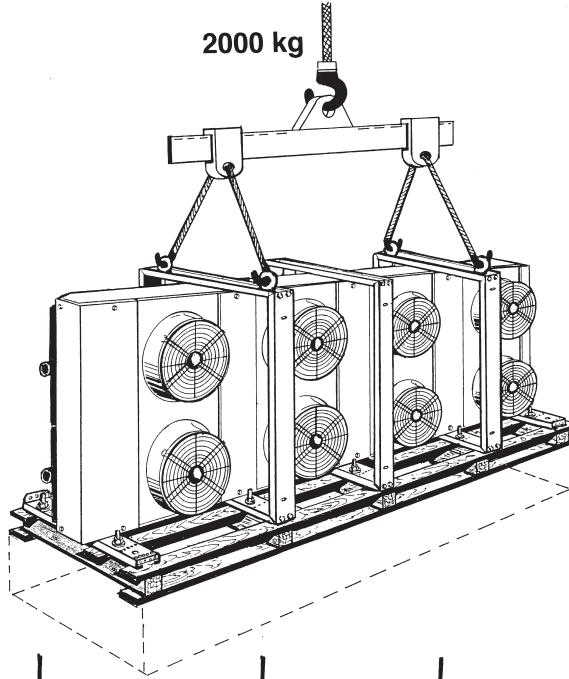
CHV

LUFTKYLD KONDENSOR

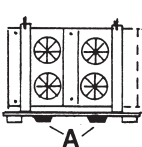
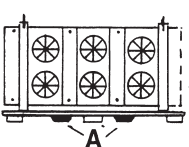
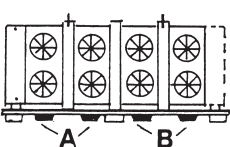
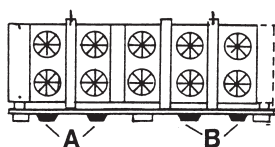
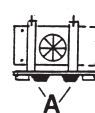
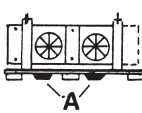
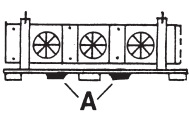
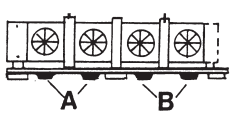
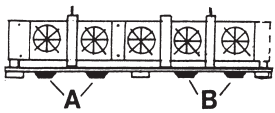
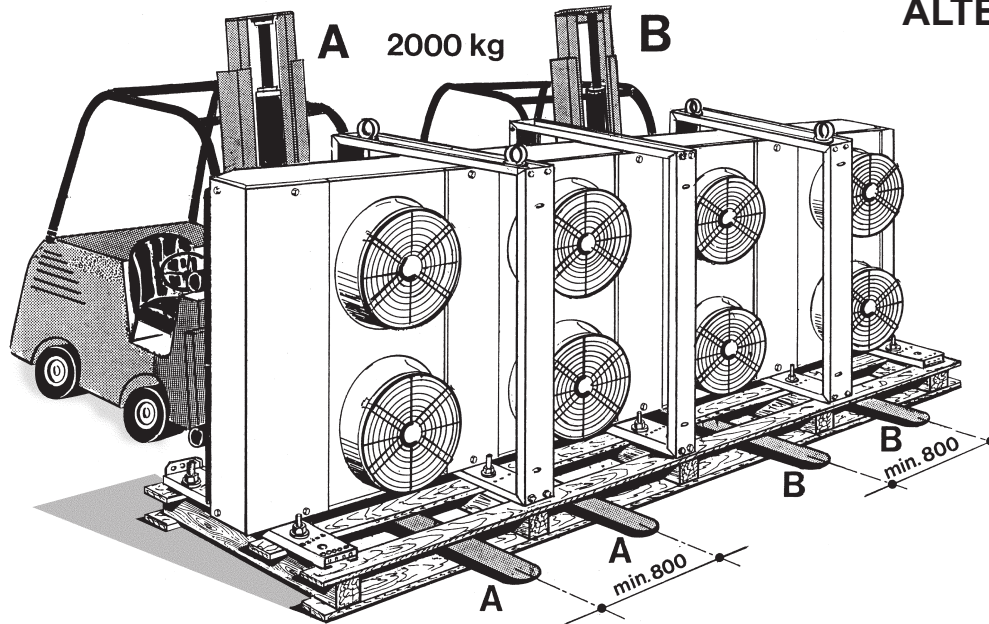
2000 kg

LHL

KYLMEDELKYLARE

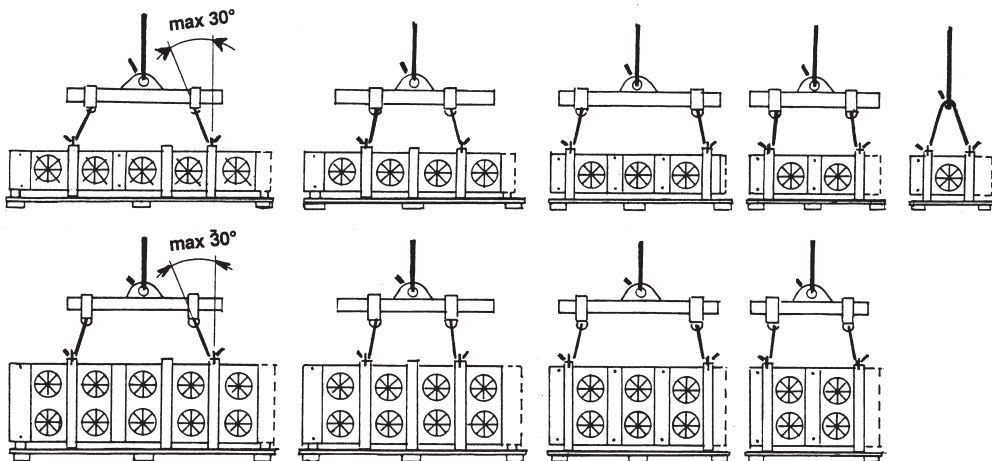
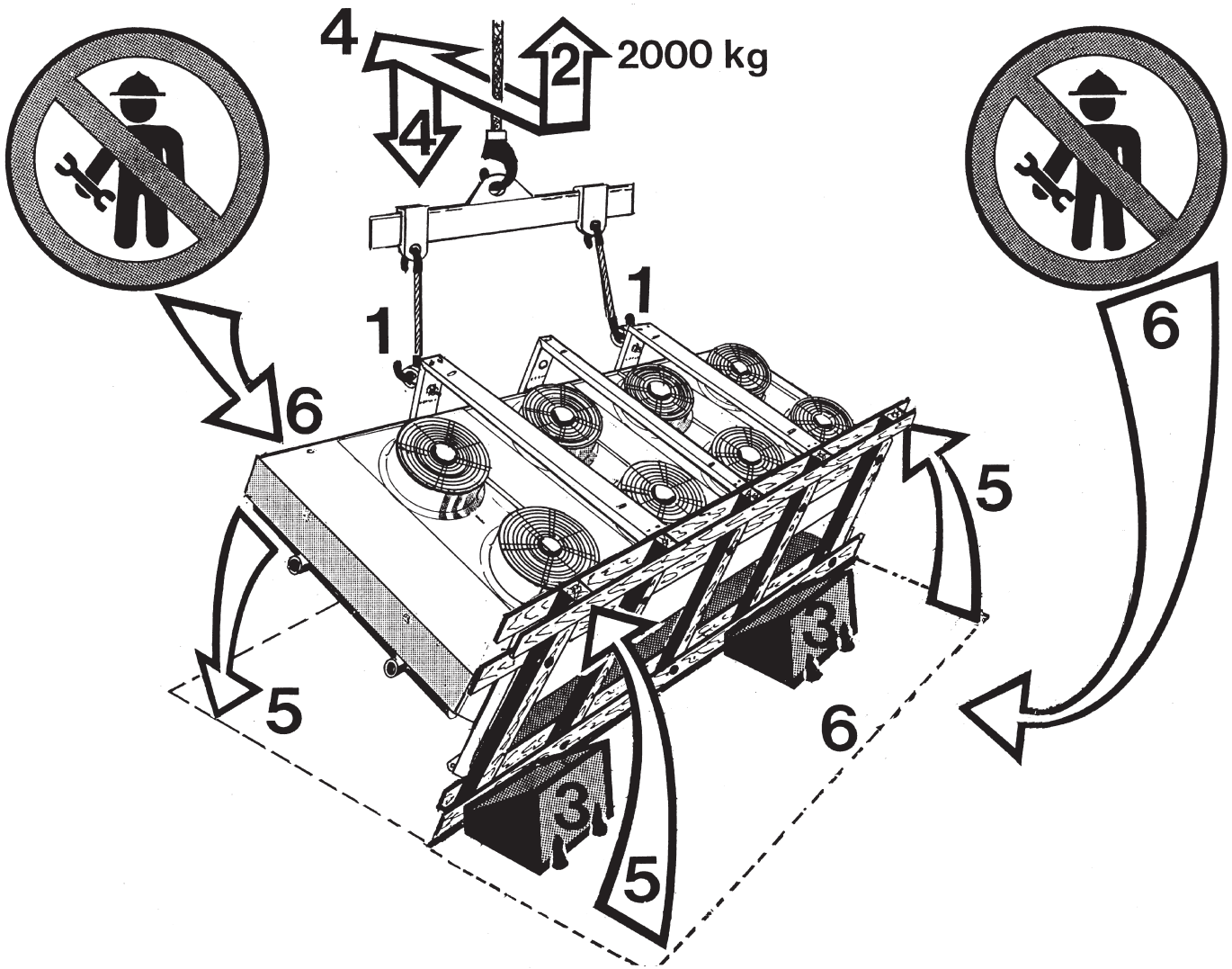


ALTERNATIV



RESNING AV ENHET

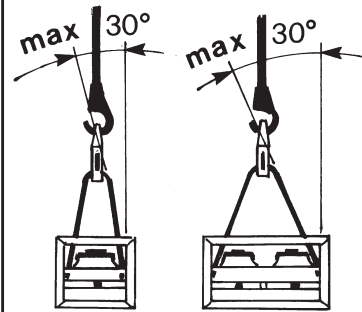
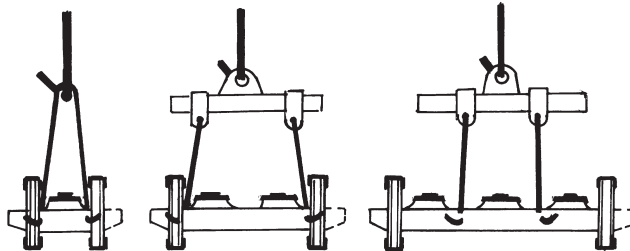
- Vid resning / tipping av enhet - kontrollera:
  - lyftrep skall röra sig vertikalt (2-4)
  - enhetens bottendel skall säkras med lämpligt objekt (3)
- Vid vändning av enhet skall operatören (6) finnas vid sidan. Inga personer får befinna sig under hängande last.



# HORISONTELL INSTALLATION

## CHV - LHL

Lyftscheman och benens placering.



Antal fläktar

1 ○

2 ∞

3 ∞∞

1 ○

4 ⊗

-

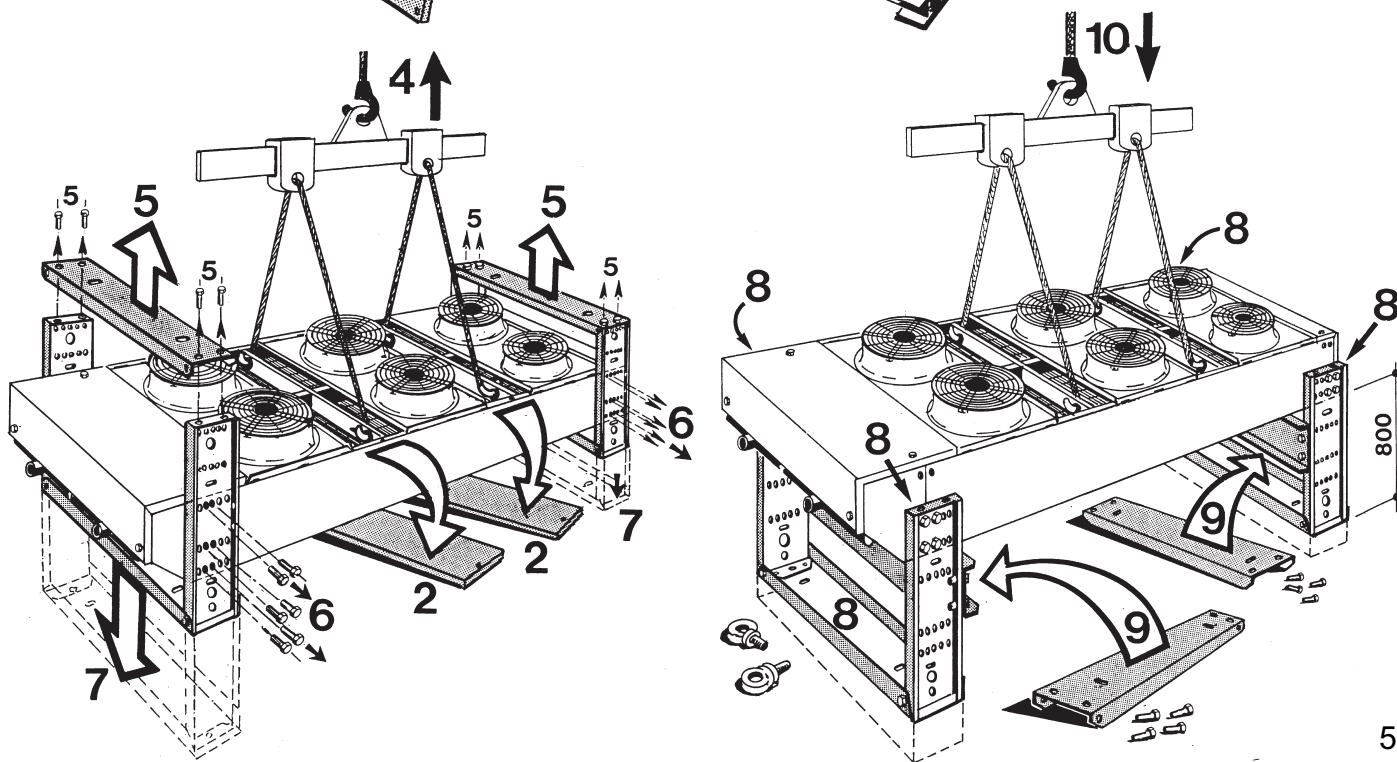
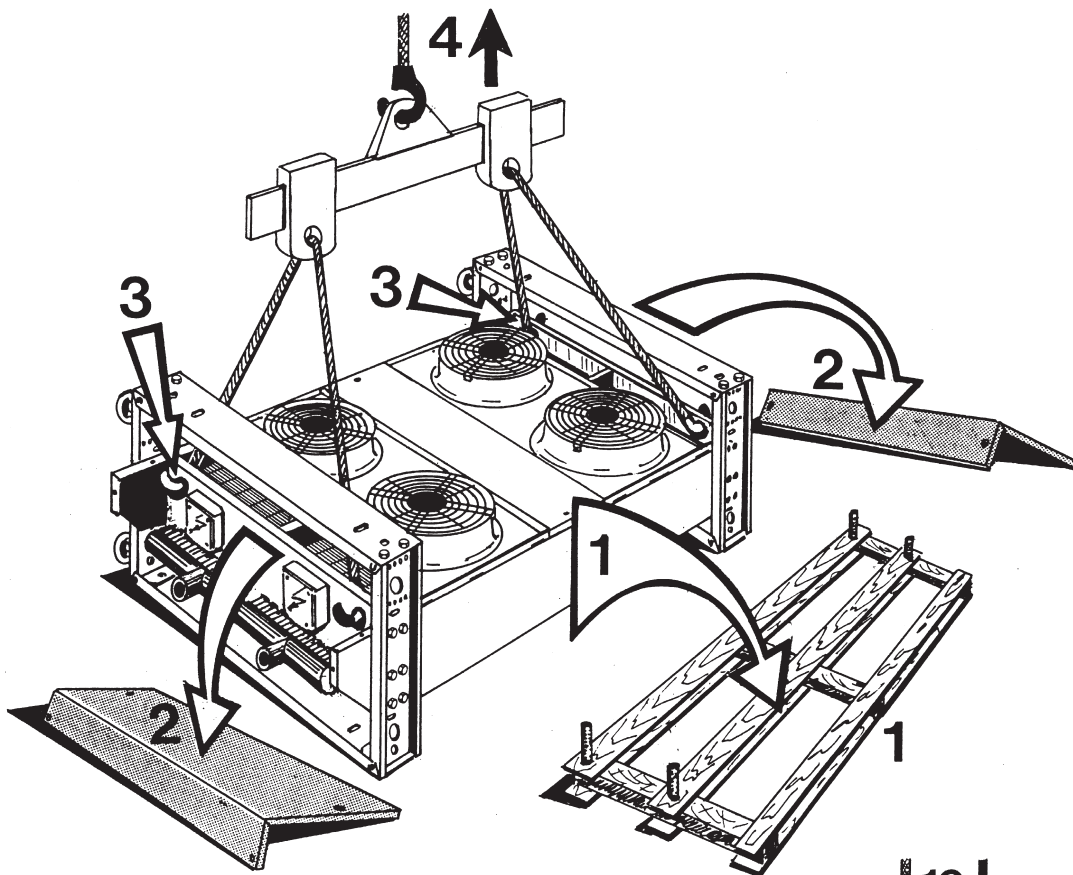
4 ⊗

6 ⊗⊗

2 ∞

6 ⊗⊗

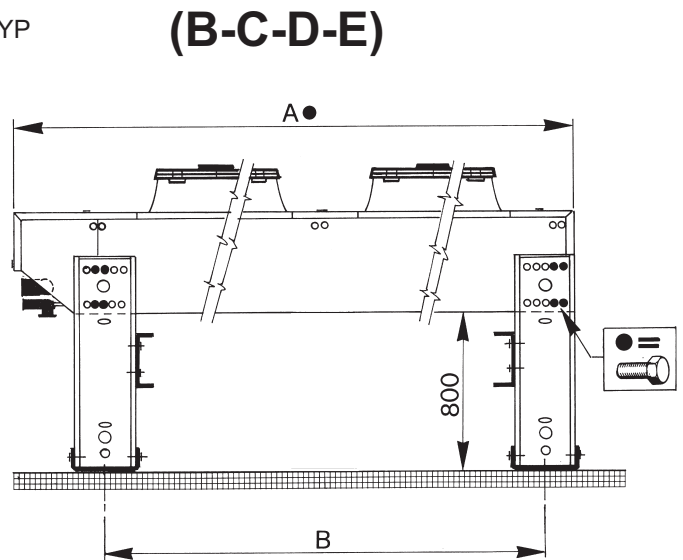
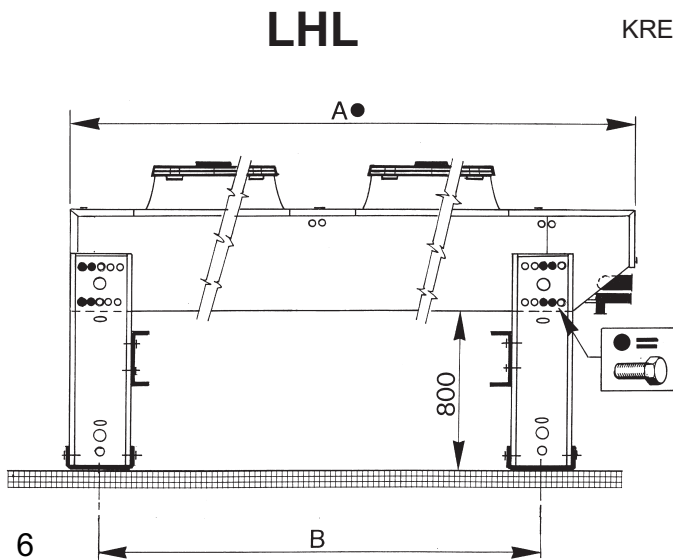
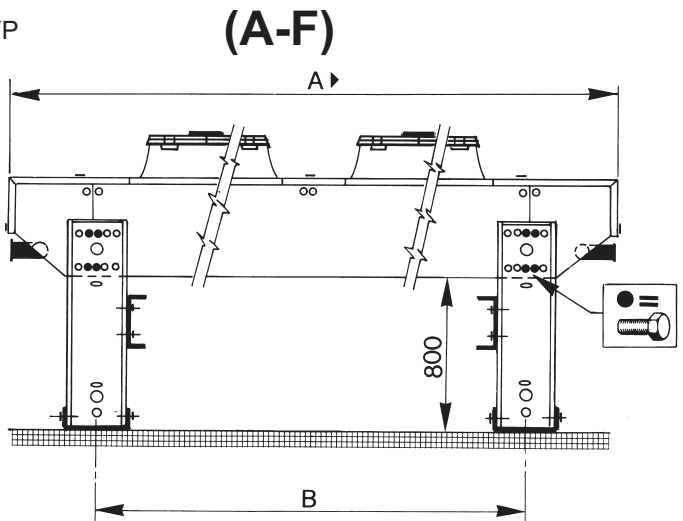
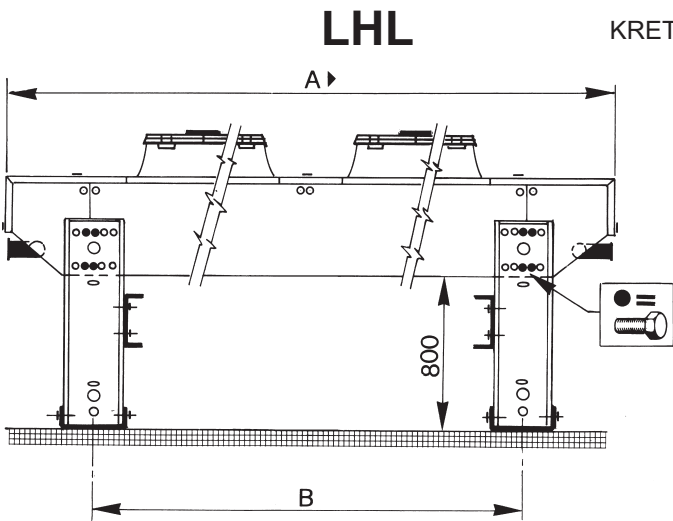
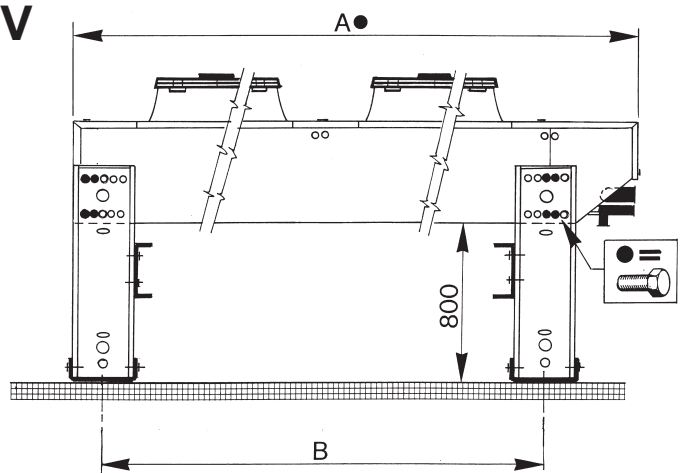
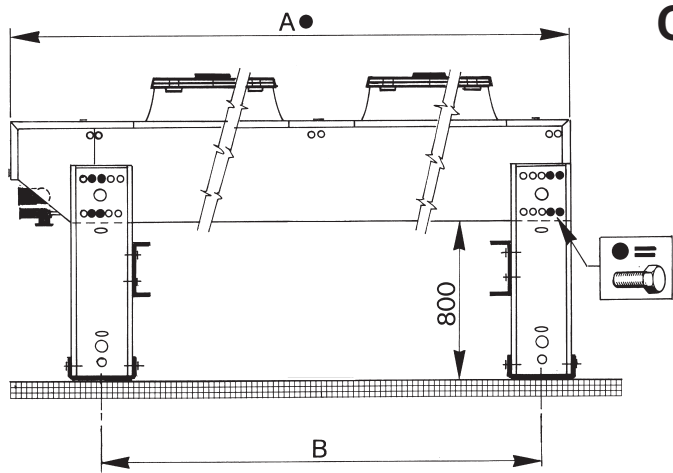
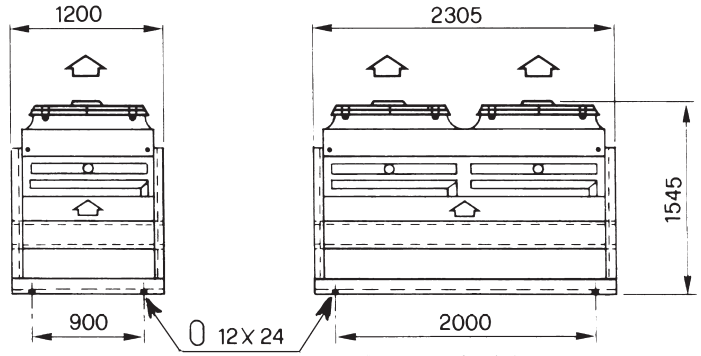
3 ∞∞



# CHV - LHL

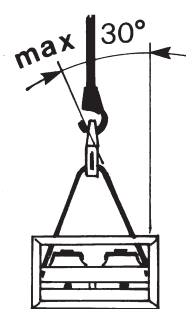
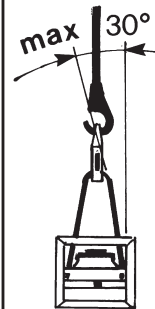
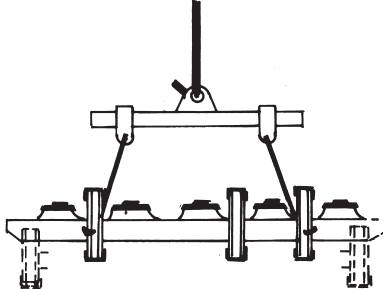
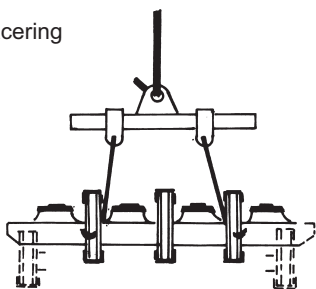
Benens placering

Antal fläktar		1 ○	2 ∞	3 ○○○
		-	4 ⊗	6 ⊗⊗
A ●	mm	1972	3572	5172
A ►	mm	2262	3862	5462
B	mm	1520	3120	4720

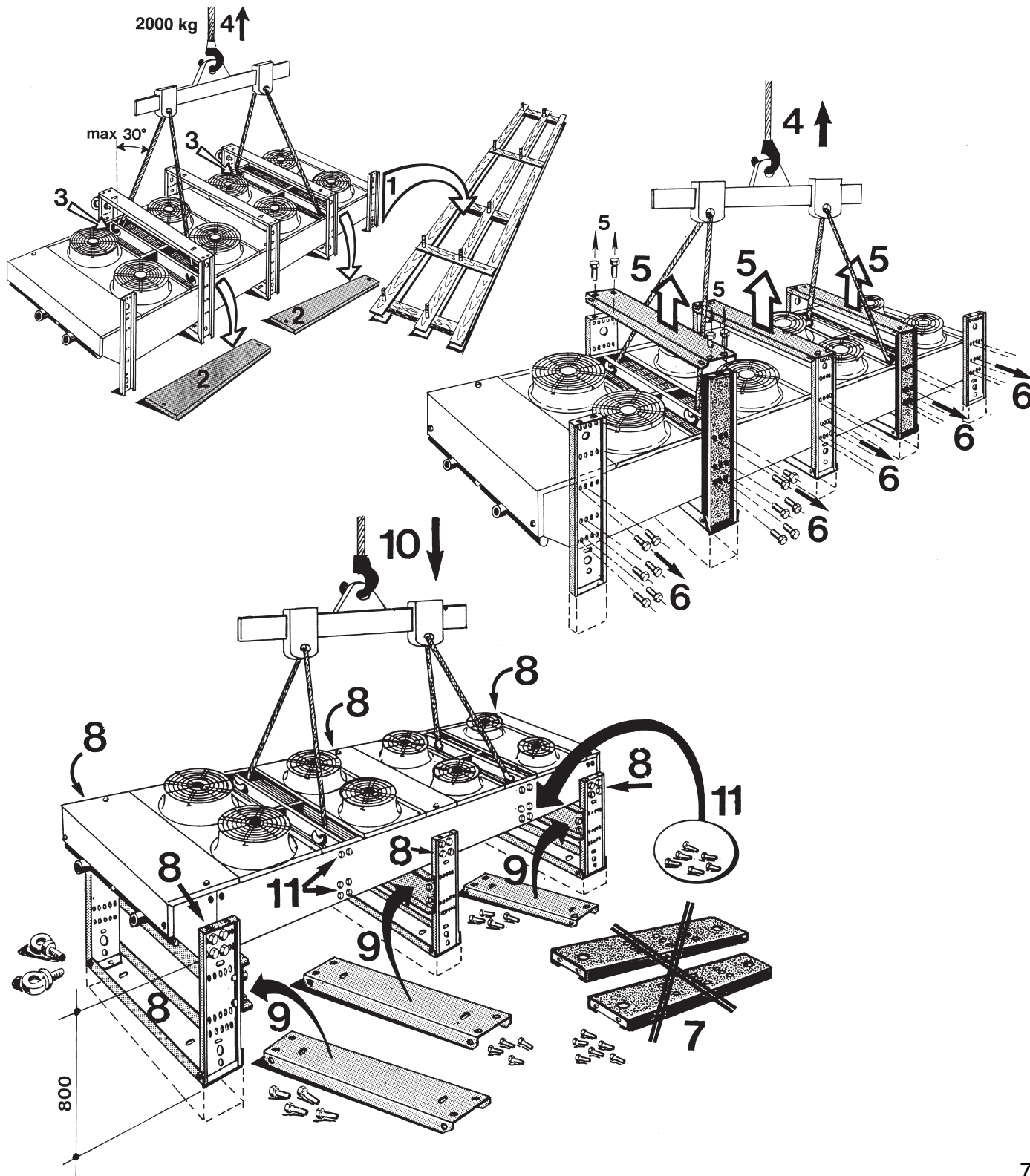


# CHV - LHL

Lyftscheman och bebens placering



Antal fläktar	4 ○○○○	5 ○○○○○	4 ○○○○	8 ○○○○○○
	8 ○○○○○○	10 ○○○○○○○○	5 ○○○○○○	10 ○○○○○○○○

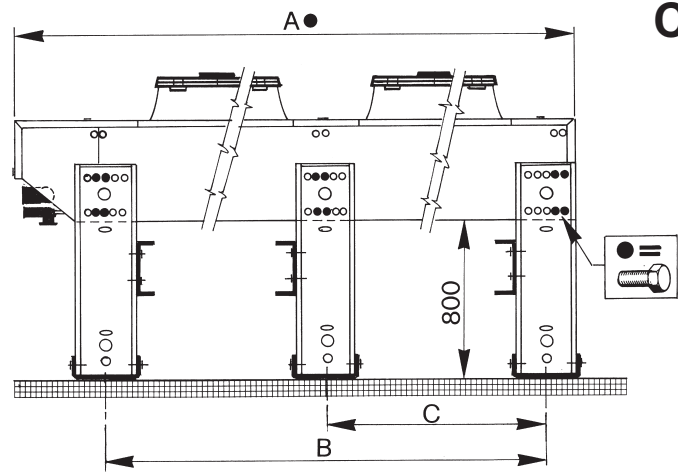
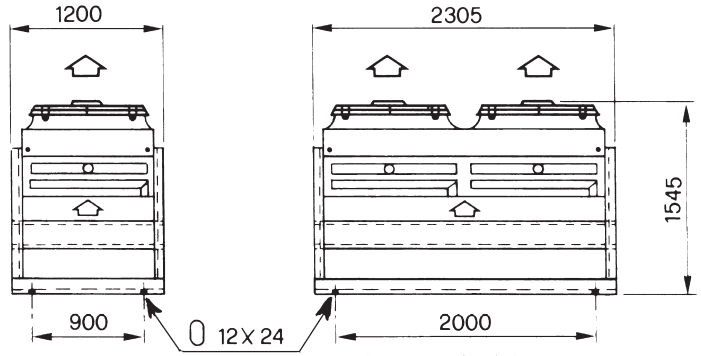


HORISONTELL INSTALLATION

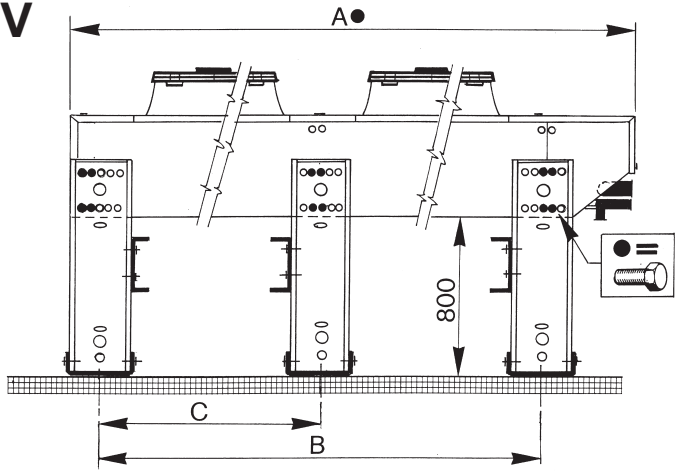
CHV - LHL

Benens placering

Antal fläktar		4 ○○○○	5 ○○○○
		8 ○○○○	10 ○○○○
A ●	mm	6772	8372
A ►	mm	7062	8662
B	mm	6320	7920
C	mm	3120	3120

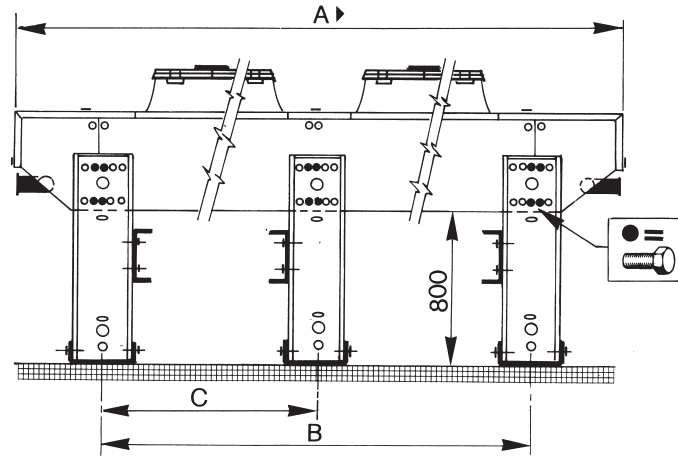


CHV

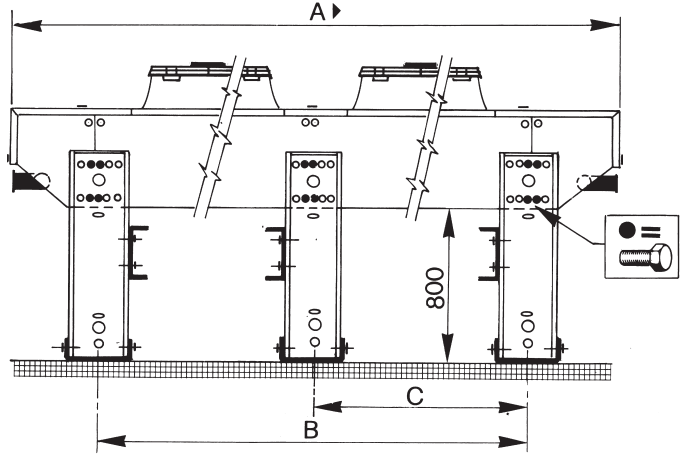


LHL

TYP AV KRETS

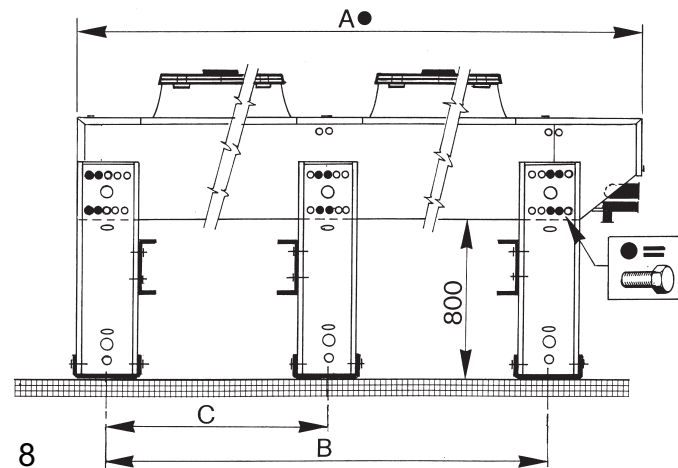


(A-F)

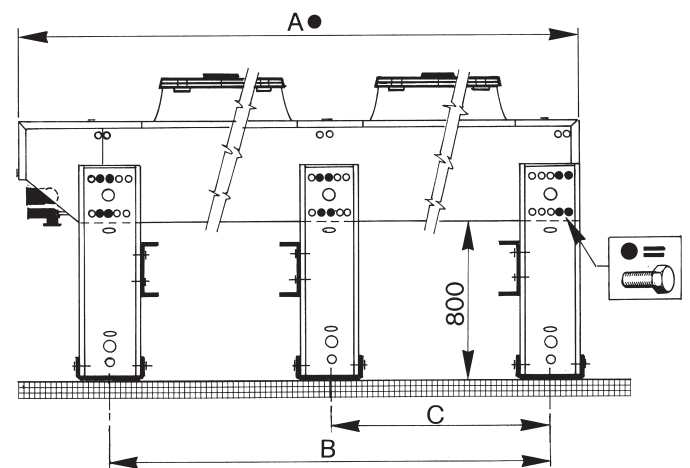


LHL

TYP AV KRETS



(B-C-D-E)

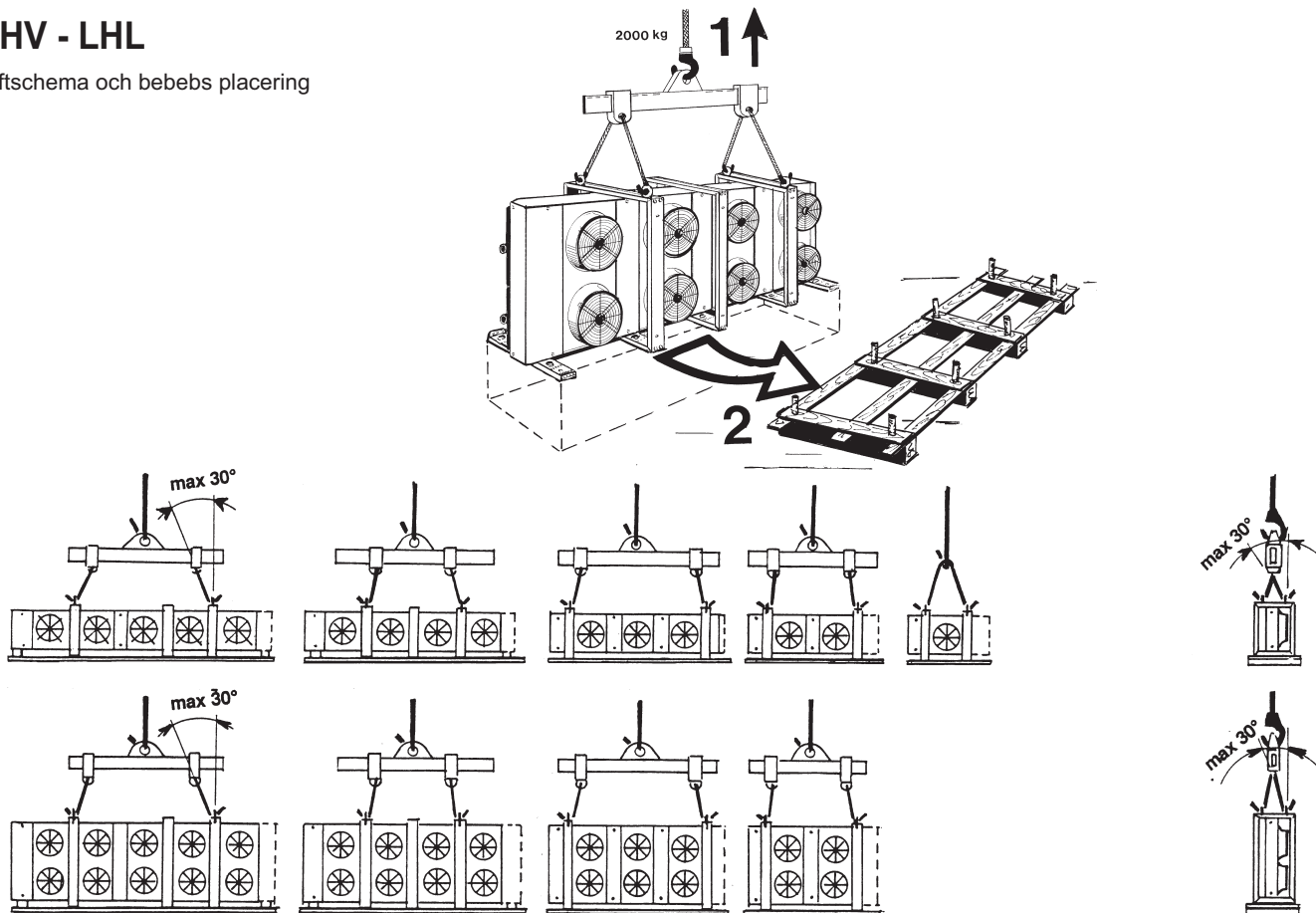




# VERTIKAL INSTALLATION

## CHV - LHL

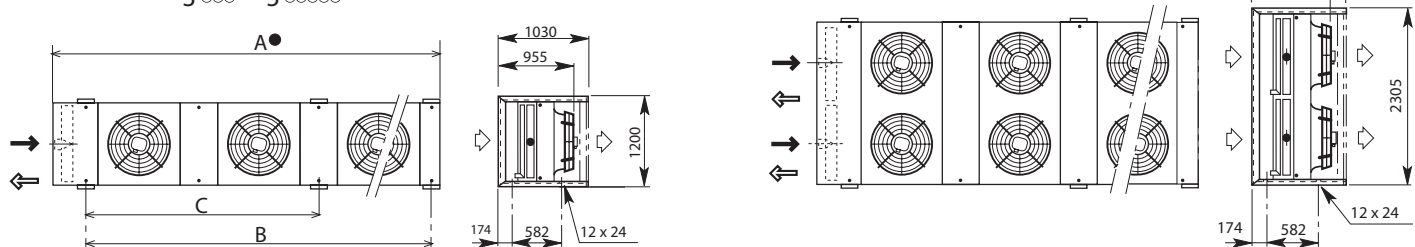
Lyftschema och bebens placering



## CHV

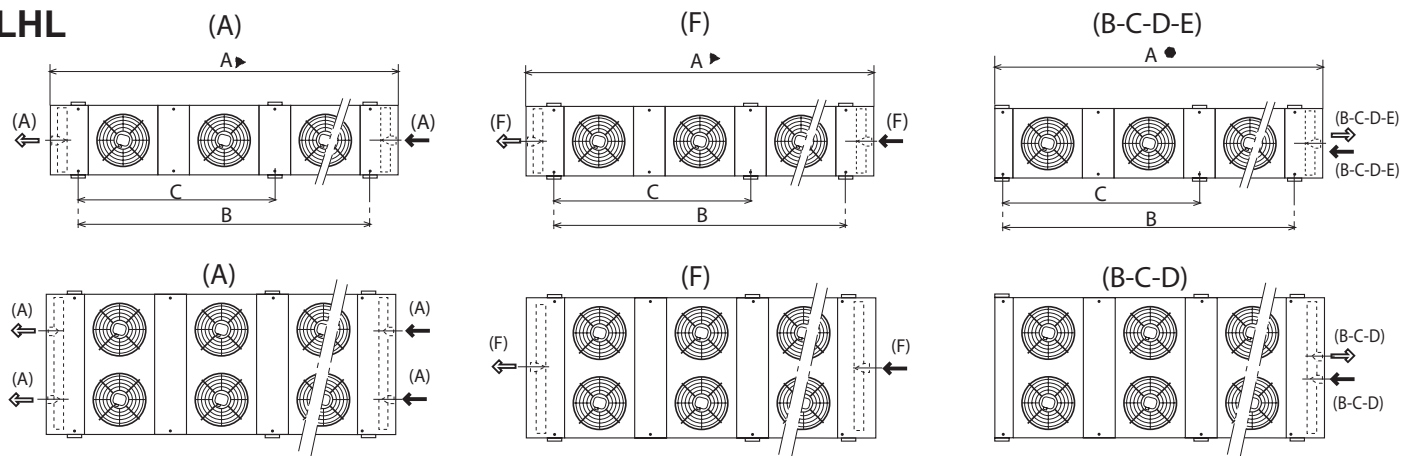
- 1 ○
- 2 ∞ 4 ∞∞∞
- 3 ∞∞ 5 ∞∞∞∞

- 4 ∞∞
- 6 ∞∞∞ 8 ∞∞∞∞

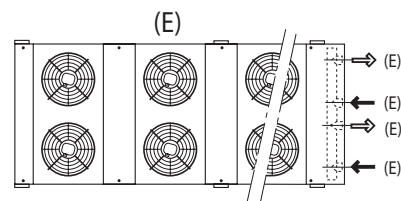


## TYP AV KRETS

## LHL



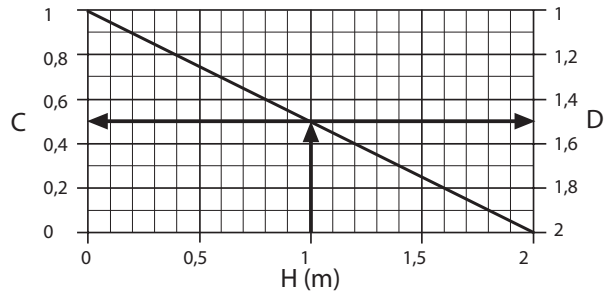
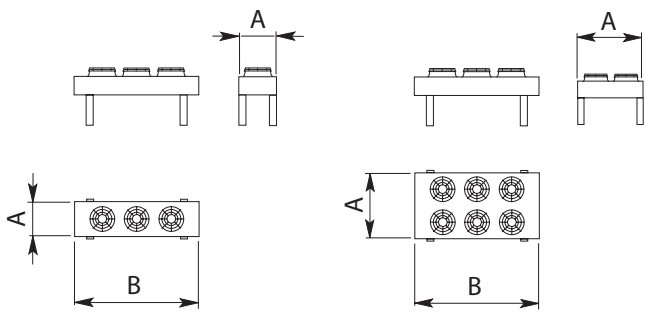
Antal fläktar	1 ○	2 ∞	3 ∞∞	4 ∞∞∞	5 ∞∞∞∞
A ● mm	1972	3572	5172	6772	8372
A ► mm	2262	3862	5462	7062	8662
B mm	1520	3120	4720	6320	7920
C mm	-	-	-	3120	3120



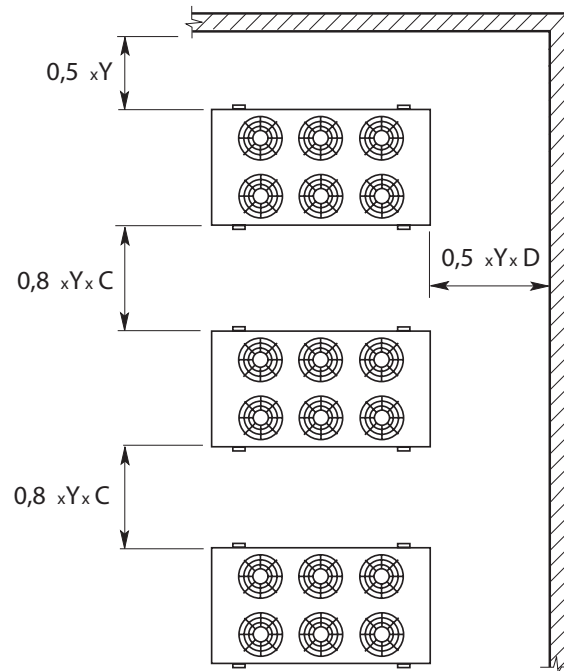
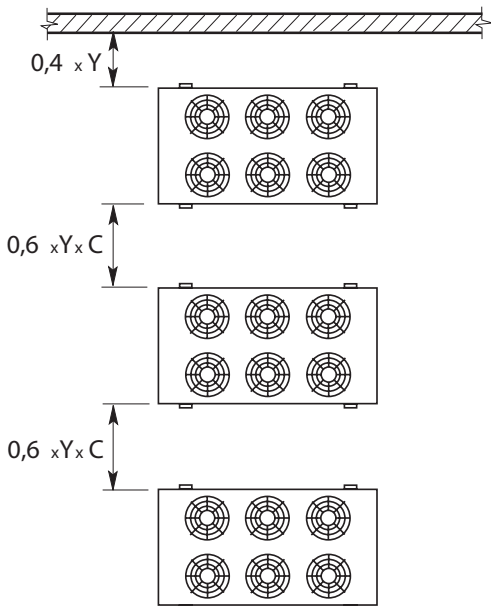
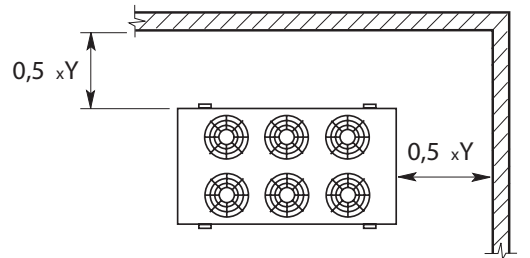
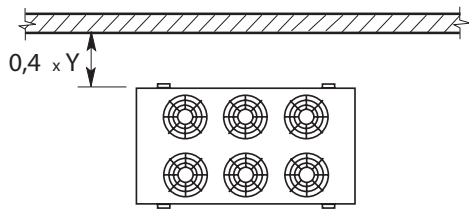
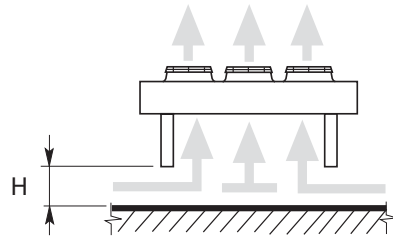
# CHV Ø 800

Horisontell installation

(H)

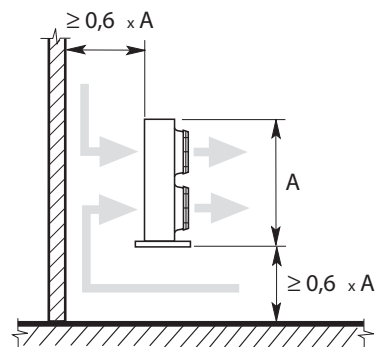
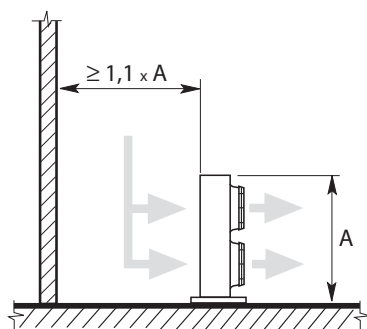
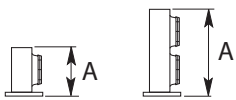


$$Y = \sqrt{A \times B}$$



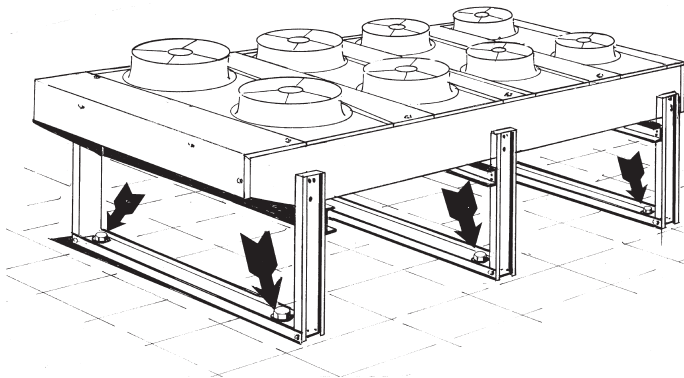
Vertikal installation

(V)

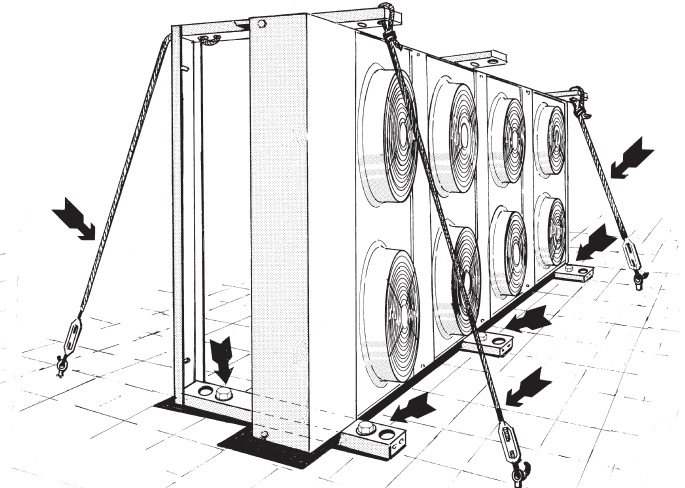


# INSTALLATION

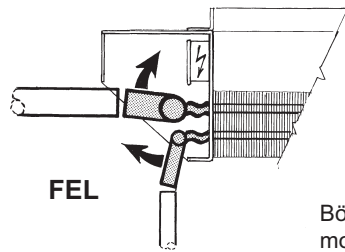
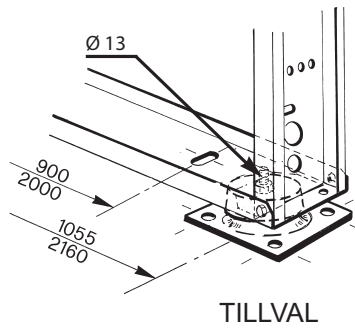
## HORISONTELL INSTALLATION



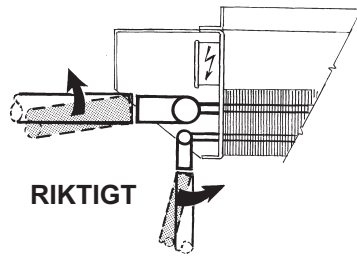
## VERTIKAL INSTALLATION



## ANSLUTNINGAR

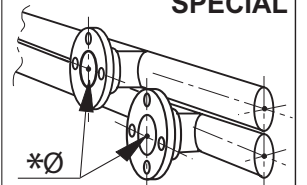


Böj ej anslutningarna mot monterörren



Endast för:

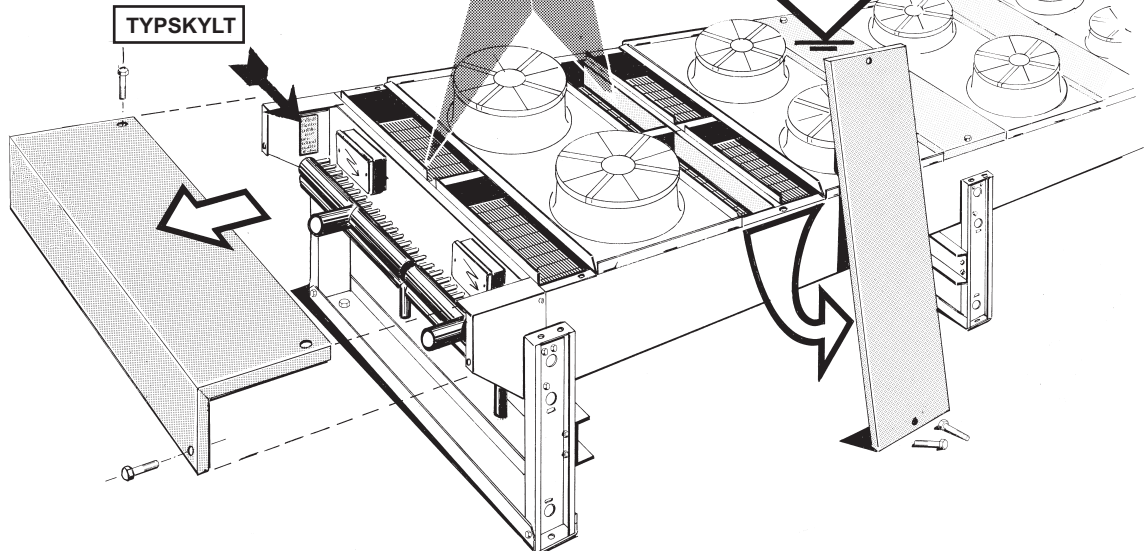
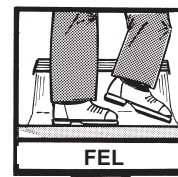
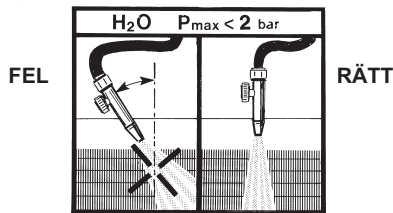
**LHL  
SPECIAL**



\* Ø är detaljerad i katalog

*Ø	Mod. Type
1"	DIN 25
1 1/2"	DIN 40
2"	DIN 50
2 1/2"	DIN 65
4"	DIN 100

## RENGÖRING



## FLÄKTMOTORER

**CHV**  
Ø 800

**LHL**  
Ø 800

	Antal	CHV	LHL	CHV	LHL	CHV	LHL	CHV	LHL
1	○	65- 76	65- 76/A-B-C-D-E-F	55- 60	55- 60/A-B-C-D-E-F	52- 54	52- 54/A-B-C-D-E-F	40	40/A-B-C-D-E-F
2	○○	134-152	134-152/A-B-C-D-E-F	109-121	109-121/A-B-C-D-E-F	101-108	101-108/A-B-C-D-E-F	80	80/A-B-C-D-E-F
3	○○○	203-208	203-208/A-B-C-D-E-F	163-180	163-180/A-B-C-D-E-F	151-162	151-162/A-B-C-D-E-F	120	120/A-B-C-D-E-F
4	○○○○	268-304	268-304/A-B-C-D-E-F	217-240	217-240/A-B-C-D-E-F	199-216	199-216/A-B-C-D-E-F	160	160/A-B-C-D-E-F
4	⊗⊗	269-305	269-305/A-B-C-D-E-F	219-241	219-241/A-B-C-D-E-F	202-218	202-218/A-B-C-D-E-F	161	161/A-B-C-D-E-F
5	○○○○○	335-380	335-380/A-B-C-D-E-F	271-301	271-301/A-B-C-D-E-F	251-270	251-270/A-B-C-D-E-F	198	198/A-B-C-D-E-F
6	⊗⊗⊗	402-456	402-456/A-B-C-D-E-F	324-360	324-360/A-B-C-D-E-F	299-323	299-323/A-B-C-D-E-F	239	239/A-B-C-D-E-F
8	⊗⊗⊗⊗	536-608	536-608/A-B-C-D-E-F	432-480	432-480/A-B-C-D-E-F	401-431	401-431/A-B-C-D-E-F	320	320/A-B-C-D-E-F
10	⊗⊗⊗⊗⊗	670-760	670-760/A-B-C-D-E-F	540-600	540-600/A-B-C-D-E-F	501-539	501-539/A-B-C-D-E-F	399	399/A-B-C-D-E-F

Motor		* 3~400 V 50 Hz		MODELL								
				FE080 SDA		FE080 ADA6N		FE080 ADA6K		FE080 NDA		
Antal poler				6		8		8PS		12		
Anslutning				△ / ∩		△ / ∩		△ / ∩		△ / ∩		
Effektförbrukning	x1			1830 W	1130 W	940 W	700 W	850 W	460 W	315 W	175 W	
Driftström	x1			I	3.70 A	2.20 A	2.20 A	1.30 A	1.90 A	1.00 A	1.00 A	0.40 A
				I <sub>A</sub>	14.00 A	4.70 A	8.40 A	2.89 A	4.70 A	1.60 A	1.90 A	0.60 A

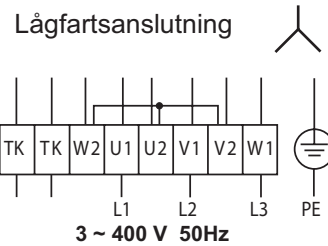
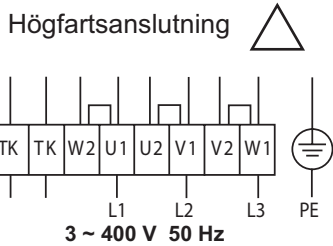
Motor		* 3~460 V 60 Hz		MODELL								
				FE080 SDA		FE080 ADA6N				FE080 NDA		
Antal poler				6		8				12		
Anslutning				△ / ∩		△ / ∩				△ / ∩		
Effektförbrukning	x1			1950 W	1300 W	1500 W	940 W			590 W	320 W	
Driftström	x1			I	3.40 A	1.95 A	2.80 A	1.60 A			1.4 A	0.7 A
				I <sub>A</sub>	13.2 A	4.2 A	10.7 A	3.4 A			2.7 A	1.1 A

I<sub>A</sub> = Startström

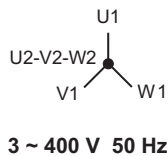
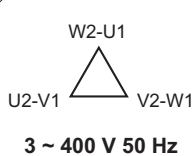
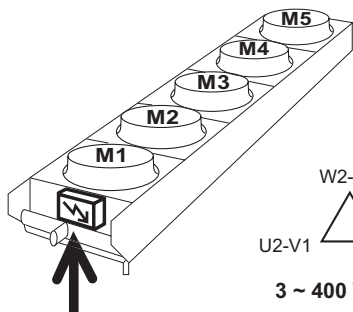
\* Motorer med termiskt överbelastningskydd T<sub>k</sub>

### MOTORANSLUTNINGAR

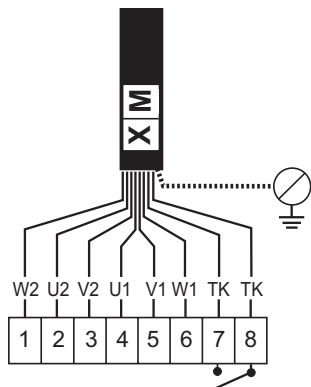
**Innan elarbeten påbörjas - kontrollera att anläggningen är spänningsfri!**



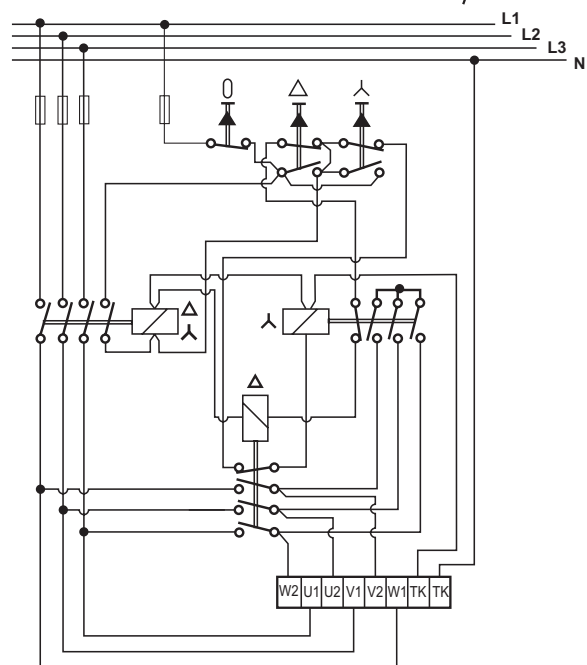
#### Motoranslutningar



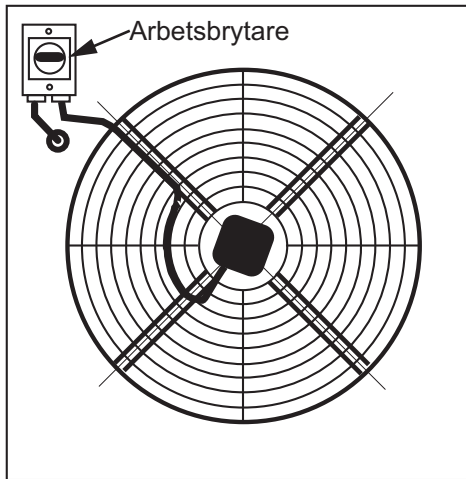
W2	Orange
U2	Röd
V2	Grå
U1	Brun
V1	Blå
W1	Svart
	Vit
	Grön




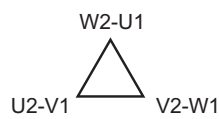
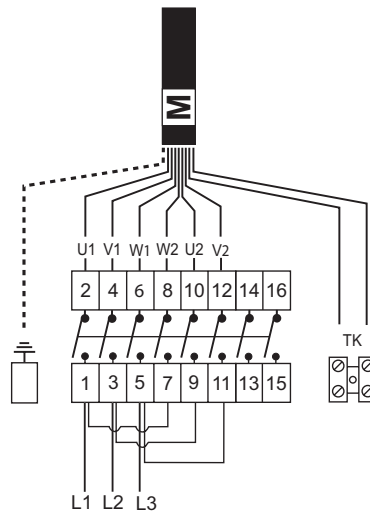
#### 2-hastighetsanslutning




## ARBETSBRYTARE

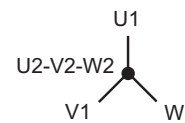
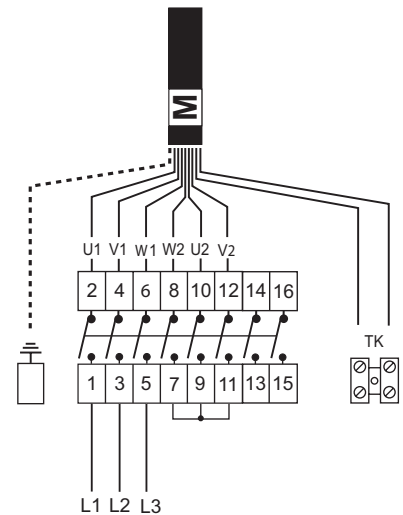


Högfartsanslutning 



3 ~ 400 V 50 Hz

Lågfartsanslutning 



3 ~ 400 V 50 Hz

OBSERVERA

## CHV - LHL

- 3-5 tim. drift rekommenderas under en tidsintervall av 4 veckor.

## LHL

- Vid användning av enbart vatten utan glykol, måste man försäkra sig om att den omgivande lufttemperaturen alltid är över 0°C.
- För att förhindra frysning under stillestånd skall enheten tappas ur och blåsas torr,
- Köldmediets ink. temp. = 60°C.

## CE - Intyg

### Tillverkningsdeklaration

I enlighet med EG:s Maskindirektiv 98/37/EU annex II B samt följande tillägg:

<b>EN 60335-1 &amp; 2 (CEI 61-50)</b>	Elsäkerhet - Allmänna krav
<b>CEI-EN 60335-2-40</b>	Elsäkerhet - krav för Kylmaskiner
<b>2004/108/CE</b>	Maskindirektiv - Elektromagnetisk kompatibilitet
<b>2006/95/CE</b>	Lågspänningsdirektiv

intygar vi att följande produkter: Luftkylda Kylmedelkylare **LHL, LHLD, ELHL**  
Luftkylda Kondensorer **CHV, CHVD, EHV**

är anpassade för inbyggnad i maskiner enligt bestämmelserna i EG:s maskindirektiv.

Produkten får inte tas i drift förrän maskinen / anläggningen, i vilken den skall byggas in i eller bli en del av, är i överensstämmelse med EG:s Maskindirektiv.

**Tillverkare:** TECNAIR LB S.r.l.  
Via Caduti della Liberazione, 53  
21040 Uboldo - Varese  
Italien

**TPi KLIMATIMPORT AB**



Underskrift

Thomas Palmberg

Namnförtydligande